

Catalog Number: JX30005

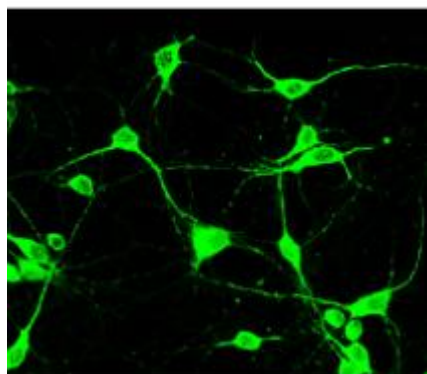
Package size: 25, 100µl

Store at: -20°C

## GFP antibody

<b>Product Name</b>	GFP antibody
<b>Product Number</b>	JX30005
<b>Host</b>	Mouse
<b>Clonality</b>	Molyclonal
<b>Application</b>	WB, ICC/IF, IP
<b>Species Reactivity</b>	Species independent
<b>Isotype</b>	IgG
<b>Storage</b>	Aliquot and store at -20°C. Avoid repeat freeze-thaw cycles.
<b>Storage Buffer</b>	PBS pH 7.2, 20% Glycerol contains 0.025% ProClin 300
<b>Form</b>	Liquid
<b>Recommended Applications Dilutions</b>	Western Blot 1:1000 – 1:2000 Immunocytochemistry / Immunofluorescence 1:300 – 1:500
<b>Notes</b>	Gently mix before use. Optimal concentrations and conditions for each application should be determined by the user.

ICC/IF analysis of methanol-fixed neuro cells transfected with GFP fusion protein using JX30005 GFP antibody (Green).  
Dilution: 1:500



WB analysis of various sample extracts using JX30005 GFP antibody.  
Loading amount: 30 µg per lane  
Dilution: 1:1000

