

Catalog Number: JX20077

Package size: 25, 100µl

Store at: -20°C

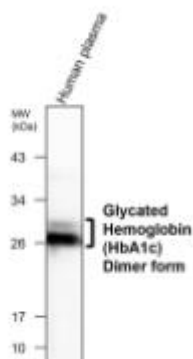
## HbA1c antibody [23C]

<b>Product Name</b>	HbA1c antibody [23C]
<b>Product Number</b>	JX20077
<b>Host</b>	Mouse
<b>Clonality</b>	Molyclonal
<b>Application</b>	WB, ELISA, Lateral flow
<b>Species Reactivity</b>	Human
<b>Isotype</b>	IgG
<b>Storage</b>	Store as concentrated solution. Centrifuge briefly prior to opening vial. For short-term storage (1-2 weeks), store at 4°C. For long-term storage, aliquot and store at -20°C or below. Avoid multiple freeze-thaw cycles.
<b>Storage Buffer</b>	PBS pH 7.2, 20% Glycerol contains 0.025% ProClin 300
<b>Form</b>	Liquid
<b>Recommended Applications Dilutions</b>	Western Blot 1:2000-1:4000 ELISA 1:5000 – 1:10000 Lateral flow
<b>Notes</b>	Gently mix before use. Optimal concentrations and conditions for each application should be determined by the user.

WB analysis of various sample extracts using JX20077 HbA1c antibody [23C].

Loading amount: 30 µg per lane

Dilution: 1:1000



WB analysis of HbA1c protein extracts using JX20077 HbA1c antibody [23C].

Dilution: 1:2000

