

Catalog Number: JX20071

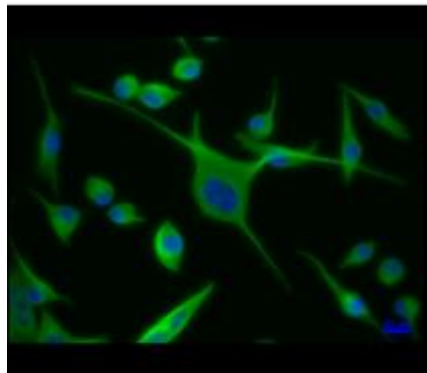
Package size: 25, 100µl

Store at: -20°C

Alpha tubulin antibody [2-4D-8D]

Product Name	Alpha tubulin antibody [2-4D-8D]
Product Number	JX20071
Host	Mouse
Clonality	Molyclonal
Application	WB, ICC/IF
Species Reactivity	Human, Mouse, Rat
Isotype	IgG
Storage	Aliquot and store at -20°C. Avoid repeat freeze-thaw cycles.
Storage Buffer	50mM Tris Glycine, 40% Glycerol (pH7.4) contains 0.025% ProClin 300
Form	Liquid
Recommended Applications Dilutions	Western Blot 1:3000-1:6000 Immunocytochemistry / Immunofluorescence 1:200–1:500 ELISA 1:10000-1:20000
Notes	Gently mix before use. Optimal concentrations and conditions for each application should be determined by the user.

ICC/IF analysis of 4% paraformaldehyde fixed cells using JX20071 Alpha tubulin antibody [2-4D-8D] (Red) counterstained with DAPI (blue).
Permeabilization: 0.1% NP-40 for 10 min at RT
Dilution: 1:400



WB analysis of various sample extracts using JX20071 Alpha tubulin antibody [2-4D-8D].
Loading amount: 30 µg per lane
Dilution: 1:3000

