



Catalog Number: JX20070

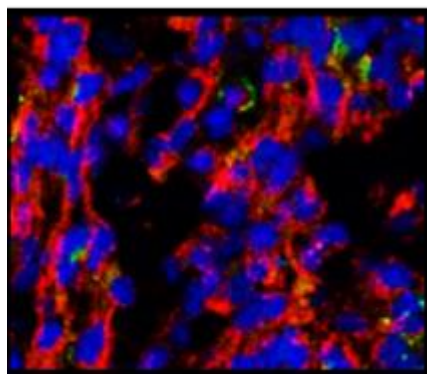
Package size: 25, 100µl

Store at: -20°C

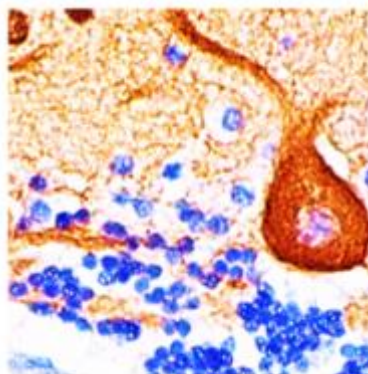
beta Tubulin 3 / Tuj1 antibody

Product Name	beta Tubulin 3 / Tuj1 antibody
Product Number	JX20070
Host	Mouse
Clonality	Molyclonal
Application	WB, IHC-P, IHC-fr
Species Reactivity	Human, Mouse, Rat
Isotype	IgG
Storage	Store as concentrated solution. Centrifuge briefly prior to opening vial. For short-term storage (1-2 weeks), store at 4°C. For long-term storage, aliquot and store at -20°C or below. Avoid multiple freeze-thaw cycles.
Storage Buffer	PBS pH 7.2, 20% Glycerol contains 0.025% ProClin 300
Form	Liquid
Recommended Applications Dilutions	Western Blot 1:500 Immunohistochemistry (Paraffin) 1:50-1:100 Immunohistochemistry (Frozen) 1:100
Notes	Gently mix before use. Optimal concentrations and conditions for each application should be determined by the user.

IHC-fr analysis of mouse cerebellum tissue section using JX20070 beta Tubulin 3 / Tuj1 antibody (Red) counterstained with DAPI (blue).
Dilution: 1:100



IHC-P analysis of human cerebellum tissue section using JX20070 beta Tubulin 3 / Tuj1 antibody.



WB analysis of various sample extracts using JX20070 beta Tubulin 3 / Tuj1 antibody.
Loading amount: 50 µg per lane
Dilution: 1:500

