



Catalog Number: JX20057

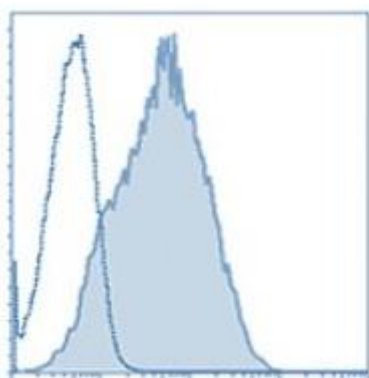
 Package size: 25, 100 μ l

Store at: -20°C

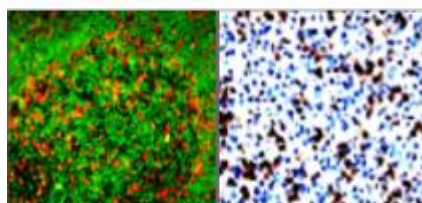
PD1 / CD279 antibody

Product Name	PD1 / CD279 antibody
Product Number	JX20057
Host	Mouse
Clonality	Molyclonal
Application	WB, ICC/IF, IHC-P, Flow cytometry
Species Reactivity	Human
Isotype	IgG
Storage	Store as concentrated solution. Centrifuge briefly prior to opening vial. For short-term storage (1-2 weeks), store at 4°C. For long-term storage, aliquot and store at -20°C or below. Avoid multiple freeze-thaw cycles.
Storage Buffer	PBS pH 7.2 contains 0.09% sodium azide
Form	Liquid
Recommended Applications Dilutions	Western Blot 1:500 Immunocytochemistry / Immunofluorescence 1: 100-1:200 Immunohistochemistry (Paraffin) 1:50-1:100 Flow cytometry 1:100
Notes	Gently mix before use. Optimal concentrations and conditions for each application should be determined by the user.

Flow cytometry analysis of PBMC using JX20057 PD1 / CD279 antibody.
Dilution: 1:100



IHC-P analysis of human smooth muscle tissue section using JX20057 PD1 / CD279 antibody.



WB analysis of various sample extracts using JX20057 PD1 / CD279 antibody.
Lane 1: Jurkat
Lane 2: PBMC untreated
Lane 3: PBMC activated with CD3 and CD28 antibodies for two days

