



Catalog Number: JX20054

Package size: 25, 100µl

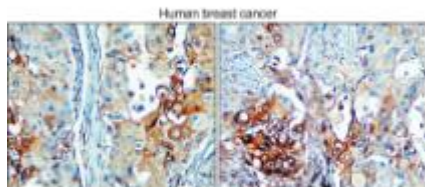
Store at: -20°C

NSE / Enolase-2 antibody [12F]

Product Name	NSE / Enolase-2 antibody [12F]
Product Number	JX20054
Host	Mouse
Clonality	Molyclonal
Application	WB, ICC/IF, IHC-P
Species Reactivity	Human, Mouse, Rat
Isotype	IgG
Storage	Aliquot and store at -20°C. Avoid repeat freeze-thaw cycles.
Storage Buffer	100mM Tris Glycine, 25% Glycerol (pH7) contains 0.025% ProClin 300
Form	Liquid
Recommended Applications Dilutions	Western Blot 1:1000– 1:12000 Immunocytochemistry / Immunofluorescence 1:500 – 1:1000 Immunohistochemistry (Paraffin) 1:200 – 1:400
Notes	Gently mix before use. Optimal concentrations and conditions for each application should be determined by the user.

IHC-P analysis of human breast cancer (TNBC) tissue section using JX20054 NSE / Enolase-2 antibody [12F].

Dilution: 1:200



WB analysis of various sample extracts using JX20054 NSE / Enolase-2 antibody [12F].

Loading amount: 30 µg per lane

Dilution: 1:1000

