



Catalog Number: JX20051

Package size: 25, 100µl

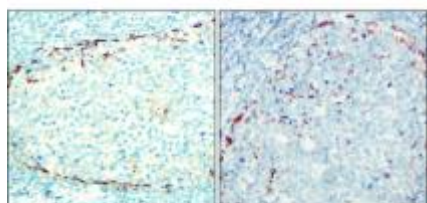
Store at: -20°C

NCAM-L1 / L1CAM antibody [23B]

Product Name	NCAM-L1 / L1CAM antibody [23B]
Product Number	JX20051
Host	Mouse
Clonality	Molyclonal
Application	WB, ICC/IF, IHC-P
Species Reactivity	Human
Isotype	IgG
Storage	Store as concentrated solution. Centrifuge briefly prior to opening vial. For short-term storage (1-2 weeks), store at 4°C. For long-term storage, aliquot and store at -20°C or below. Avoid multiple freeze-thaw cycles.
Storage Buffer	PBS pH 7.2, 20% Glycerol contains 0.025% ProClin 300
Form	Liquid
Recommended Applications Dilutions	Western Blot 1:1000-1:2000 Immunocytochemistry / Immunofluorescence 1:300 – 1:500 Immunohistochemistry (Paraffin) 1:50 – 1:100
Notes	Gently mix before use. Optimal concentrations and conditions for each application should be determined by the user.

IHC-P analysis of human tonsil carcinoma tissue section using JX20051 NCAM-L1 / L1CAM antibody [23B].

Dilution: 1:100



WB analysis of various sample extracts using JX20051 NCAM-L1 / L1CAM antibody [23B].

Loading amount: 30 µg per lane

Dilution: 1:1000

