



Catalog Number: JX20048

Package size: 25, 100µl

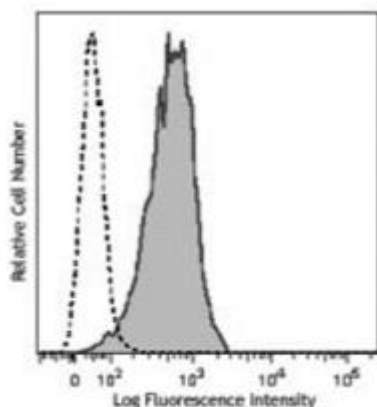
Store at: -20°C

## LAMP2 / CD107b antibody

<b>Product Name</b>	LAMP2 / CD107b antibody
<b>Product Number</b>	JX20048
<b>Host</b>	Mouse
<b>Clonality</b>	Molyclonal
<b>Application</b>	WB, ICC/IF, IHC-P, IHC-Fr
<b>Species Reactivity</b>	Human
<b>Isotype</b>	IgG
<b>Storage</b>	Store as concentrated solution. Centrifuge briefly prior to opening vial. For short-term storage (1-2 weeks), store at 4°C. For long-term storage, aliquot and store at -20°C or below. Avoid multiple freeze-thaw cycles.
<b>Storage Buffer</b>	PBS pH 7.2 contains 0.09% sodium azide
<b>Form</b>	Liquid
<b>Recommended Applications Dilutions</b>	Western Blot 1:500-1:1000 Immunocytochemistry / Immunofluorescence 1:100-1:300 Immunohistochemistry (Paraffin) 1:50-1:150 Immunohistochemistry (Frozen) 1:50-1:150
<b>Notes</b>	Gently mix before use. Optimal concentrations and conditions for each application should be determined by the user.

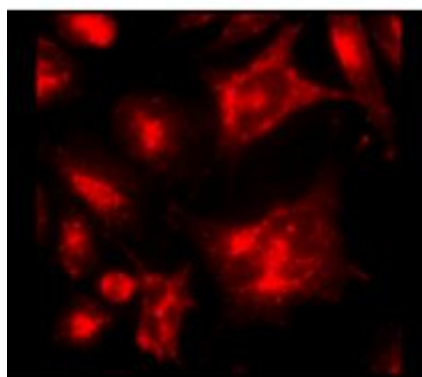
Flow cytometry analysis of permeabilized KG1a cells using JX20048 LAMP2 / CD107b antibody.

Dilution: 1:50



ICC/IF analysis of 4% paraformaldehyde fixed cells using JX20048 LAMP2 / CD107b antibody (Red) counterstained with DAPI (blue).

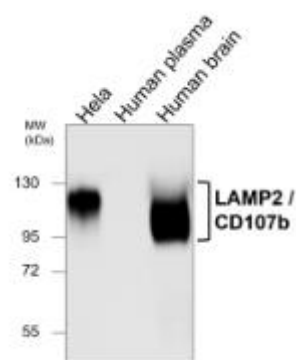
Permeabilization: 0.1% NP-40 for 10 min at RT Dilution: 1:200



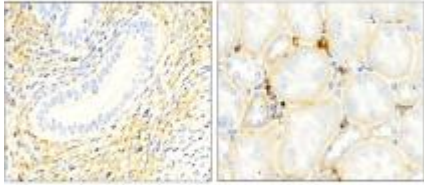
WB analysis of various sample extracts using JX20048 LAMP2 / CD107b antibody.

Loading amount: 50 µg per lane

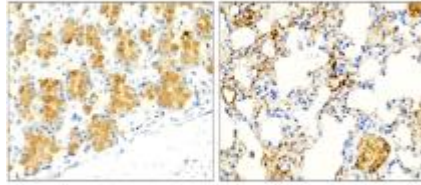
Dilution: 1:500



IHC-P analysis of mouse tissue section  
using JX20048 LAMP2 / CD107b antibody.  
Antigen retrieval: Citrate Buffer, pH 6.0  
Dilution: 1:100



IHC-P analysis of mouse tissue section  
using JX20048 LAMP2 / CD107b antibody.  
Antigen retrieval: Citrate Buffer, pH 6.0  
Dilution: 1:100



IHC-P analysis of human cancer tissue  
section using JX20048 LAMP2 / CD107b  
antibody.  
Dilution: 1:100

