



Catalog Number: JX20045

Package size: 25, 100µl

Store at: -20°C

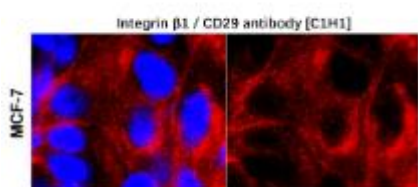
## Integrin β1 / CD29 antibody [C1H1]

<b>Product Name</b>	Integrin β1 / CD29 antibody [C1H1]
<b>Product Number</b>	JX20045
<b>Host</b>	Mouse
<b>Clonality</b>	Molyclonal
<b>Application</b>	WB, ICC/IF, IHC-P
<b>Species Reactivity</b>	Human, Mouse, Rat
<b>Isotype</b>	IgG
<b>Storage</b>	Aliquot and store at -20°C. Avoid repeat freeze-thaw cycles.
<b>Storage Buffer</b>	PBS pH 7.2, 50% Glycerol contains 0.025% ProClin 300
<b>Form</b>	Liquid
<b>Recommended Applications Dilutions</b>	Western Blot 1:500-1:1000 Immunocytochemistry / Immunofluorescence 1:200 – 1:500 Immunohistochemistry (Paraffin) 1:50 – 1:100
<b>Notes</b>	Gently mix before use. Optimal concentrations and conditions for each application should be determined by the user.

ICC/IF analysis of 4% paraformaldehyde fixed cells using JX20045 Integrin β1 / CD29 antibody [C1H1] (Red) counterstained with DAPI (blue).

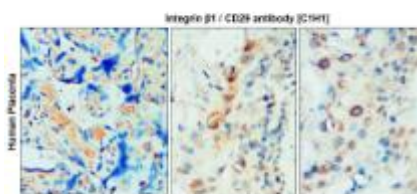
Permeabilization: 0.1% NP-40 for 10 min at RT

Dilution: 1:200



IHC-P analysis of human cancer tissue section using JX20045 Integrin β1 / CD29 antibody [C1H1].

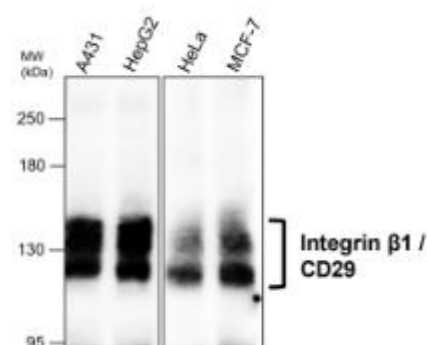
Dilution: 1:50



WB analysis of various sample extracts using JX20045 Integrin β1 / CD29 antibody [C1H1].

Loading amount: 30 µg per lane

Dilution: 1:1000



WB analysis of various sample extracts  
using JX20045 Integrin  $\beta$ 1 / CD29 antibody  
[C1H1].

Loading amount: 30  $\mu$ g per lane

Dilution: 1:500

