



Catalog Number: JX20032

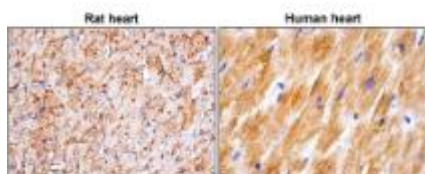
Package size: 25, 100µl

Store at: -20°C

GLUT4 Glucose Transporter antibody

| | |
|---|--|
| Product Name | GLUT4 Glucose Transporter antibody |
| Product Number | JX20032 |
| Host | Mouse |
| Clonality | Molyclonal |
| Application | WB, ICC/IF, IHC-P |
| Species Reactivity | Human, Mouse, Rat |
| Isotype | IgG |
| Storage | Store as concentrated solution. Centrifuge briefly prior to opening vial. For short-term storage (1-2 weeks), store at 4°C. For long-term storage, aliquot and store at -20°C or below. Avoid multiple freeze-thaw cycles. |
| Storage Buffer | PBS pH 7.2, 20% Glycerol contains 0.025% ProClin 300 |
| Form | Liquid |
| Recommended Applications Dilutions | Western Blot 1:500 Immunocytochemistry / Immunofluorescence 1:100 – 1:200 Immunohistochemistry (Paraffin) 1:50 – 1:100 |
| Notes | Gently mix before use. Optimal concentrations and conditions for each application should be determined by the user. |

IHC-P analysis of human and mouse heart tissue section using JX20032 GLUT4 Glucose Transporter antibody.



WB analysis of various sample extracts using JX20032 GLUT4 Glucose Transporter antibody.

Loading amount: 35 µg per lane

Dilution: 1:500

