

Catalog Number: JX20020

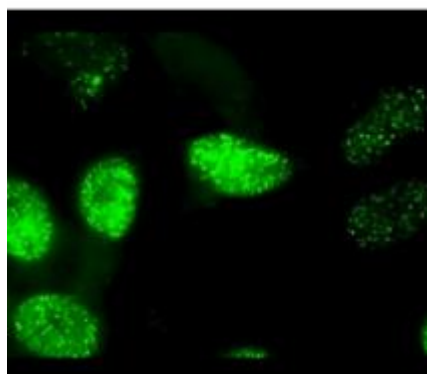
Package size: 25, 100µl

Store at: -20°C

c-JUN / AP-1 antibody

Product Name	c-JUN / AP-1 antibody
Product Number	JX20020
Host	Mouse
Clonality	Molyclonal
Application	WB, ICC/IF, IHC-P
Species Reactivity	Human, Mouse, Rat
Isotype	IgG
Storage	Store as concentrated solution. Centrifuge briefly prior to opening vial. For short-term storage (1-2 weeks), store at 4°C. For long-term storage, aliquot and store at -20°C or below. Avoid multiple freeze-thaw cycles.
Storage Buffer	PBS pH 7.2, 20% Glycerol contains 0.025% ProClin 300
Form	Liquid
Recommended Applications Dilutions	Western Blot 1:500 – 1:1000 Immunocytochemistry / Immunofluorescence 1:100 – 1:200 Immunohistochemistry (Paraffin) 1:50 – 1:100
Notes	Gently mix before use. Optimal concentrations and conditions for each application should be determined by the user.

ICC/IF analysis of HeLa cells using JX20020 c-JUN / AP-1 antibody (Green).
Dilution: 1:200



WB analysis of various sample extracts using JX20020 c-JUN / AP-1 antibody.
Loading amount: 35 µg per lane
Dilution: 1:500

