

Catalog Number: JX20019

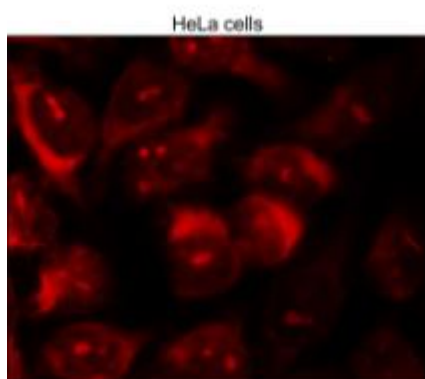
Package size: 25, 100µl

Store at: -20°C

## CDC42 antibody

|   |   |
|---|---|
| <b>Product Name</b>                       | CDC42 antibody  |
| <b>Product Number</b>                     | JX20019   |
| <b>Host</b>                               | Mouse   |
| <b>Clonality</b>                          | Molyclonal  |
| <b>Application</b>                        | WB, ICC/IF, IHC-P   |
| <b>Species Reactivity</b>                 | Human, Mouse, Rat, Drosophila   |
| <b>Isotype</b>                            | IgG   |
| <b>Storage</b>                            | Aliquot and store at -20°C. Avoid repeat freeze-thaw cycles.  |
| <b>Storage Buffer</b>                     | 100mM Tris Glycine, 25% Glycerol (pH7) contains 0.025% ProClin 300  |
| <b>Form</b>                               | Liquid  |
| <b>Recommended Applications Dilutions</b> | Western Blot 1:500 – 1:1000<br>Immunocytochemistry / Immunofluorescence 1:100 – 1:200<br>Immunohistochemistry (Paraffin) 1:50 – 1:100 |
| <b>Notes</b>                              | Gently mix before use. Optimal concentrations and conditions for each application should be determined by the user.                   |

ICC/IF analysis of HeLa cells using JX20019 CDC42 antibody.  
Dilution: 1:200



WB analysis of various sample extracts using JX20019 CDC42 antibody.  
Loading amount: 35 µg per lane  
Dilution: 1:500

