



Catalog Number: JX20009

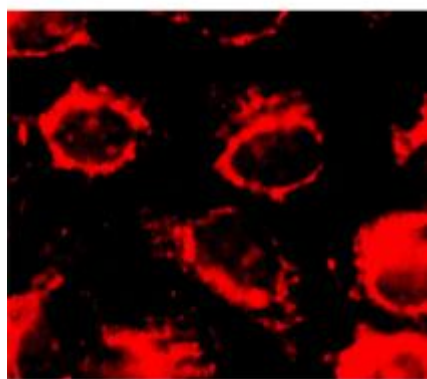
Package size: 25, 100µl

Store at: -20°C

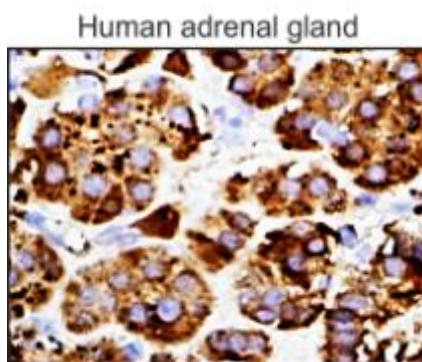
ApoE / Apolipoprotein E antibody

Product Name	ApoE / Apolipoprotein E antibody
Product Number	JX20009
Host	Mouse
Clonality	Molyclonal
Application	WB, ICC/IF, IHC-P
Species Reactivity	Human
Isotype	IgG
Storage	Store as concentrated solution. Centrifuge briefly prior to opening vial. For short-term storage (1-2 weeks), store at 4°C. For long-term storage, aliquot and store at -20°C or below. Avoid multiple freeze-thaw cycles.
Storage Buffer	PBS pH 7.2, 20% Glycerol contains 0.025% ProClin 300
Form	Liquid
Recommended Applications Dilutions	Western Blot 1:500-1:1000 Immunocytochemistry / Immunofluorescence 1:200 – 1:300 Immunohistochemistry (Paraffin) 1:100 – 1:200
Notes	Gently mix before use. Optimal concentrations and conditions for each application should be determined by the user.

ICC/IF analysis of 4% paraformaldehyde fixed cells using JX20009 ApoE / Apolipoprotein E antibody (Red).
Permeabilization: 0.1% NP-40 for 10 min at RT
Dilution: 1:200



IHC-P analysis of human tissue section using JX20009 ApoE / Apolipoprotein E antibody.
Dilution: 1:100



WB analysis of various sample extracts using JX20009 ApoE / Apolipoprotein E antibody.
Loading amount: 30 µg per lane
Dilution: 1:800

