

Catalog Number: JX20007

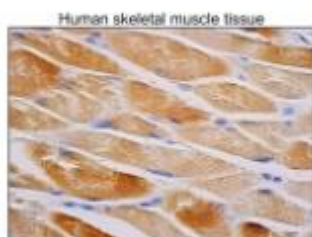
Package size: 25, 100µl

Store at: -20°C

## AMPK alpha 1/2 antibody

<b>Product Name</b>	AMPK alpha 1/2 antibody
<b>Product Number</b>	JX20007
<b>Host</b>	Mouse
<b>Clonality</b>	Molyclonal
<b>Application</b>	WB, ICC/IF, IHC-P
<b>Species Reactivity</b>	Human, Mouse, Rat
<b>Isotype</b>	IgG
<b>Storage</b>	Aliquot and store at -20°C. Avoid repeat freeze-thaw cycles.
<b>Storage Buffer</b>	100mM Tris Glycine, 25% Glycerol (pH7) contains 0.025% ProClin 300
<b>Form</b>	Liquid
<b>Recommended Applications Dilutions</b>	Western Blot 1:500 – 1:1000 Immunocytochemistry / Immunofluorescence 1:100 – 1:200 Immunohistochemistry (Paraffin) 1:50 – 1:100
<b>Notes</b>	Gently mix before use. Optimal concentrations and conditions for each application should be determined by the user.

IHC-P analysis of human skeletal muscle tissue section using JX20007 AMPK alpha 1/2 antibody.



WB analysis of various sample extracts using JX20007 AMPK alpha 1/2 antibody. Loading amount: 35 µg per lane

