

Catalog Number: JX20004

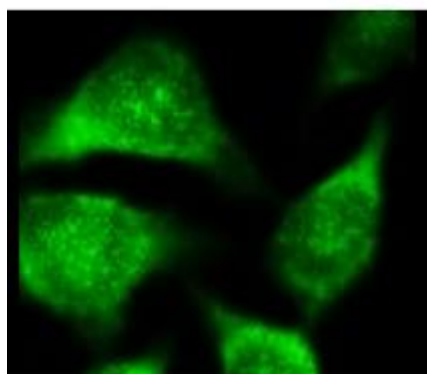
Package size: 25, 100µl

Store at: -20°C

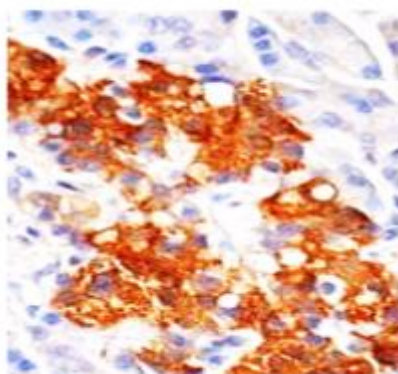
## AKT1+2+3 / AKT antibody

<b>Product Name</b>	AKT1+2+3 / AKT antibody
<b>Product Number</b>	JX20004
<b>Host</b>	Mouse
<b>Clonality</b>	Molyclonal
<b>Application</b>	WB, ICC/IF, IHC-P
<b>Species Reactivity</b>	Human, Mouse, Rat
<b>Isotype</b>	IgG
<b>Storage</b>	Store as concentrated solution. Centrifuge briefly prior to opening vial. For short-term storage (1-2 weeks), store at 4°C. For long-term storage, aliquot and store at -20°C or below. Avoid multiple freeze-thaw cycles.
<b>Storage Buffer</b>	PBS pH 7.2, 20% Glycerol contains 0.025% ProClin 300
<b>Form</b>	Liquid
<b>Recommended Applications Dilutions</b>	Western Blot 1:500-1:1000 Immunocytochemistry / Immunofluorescence 1:100-1:200 Immunohistochemistry (Paraffin) 1:50-1:100
<b>Notes</b>	Gently mix before use. Optimal concentrations and conditions for each application should be determined by the user.

ICC/IF analysis of HeLa cells using JX20004 AKT1+2+3 / AKT antibody (Green).  
Dilution: 1:100



IHC-P analysis of human pancreas tissue section using JX20004 AKT1+2+3 / AKT antibody.



WB analysis of various sample extracts using JX20004 AKT1+2+3 / AKT antibody.  
Loading amount: 35 µg per lane  
Dilution: 1:500

