



Catalog Number: JX20001

Package size: 25, 100µl

Store at: -20°C

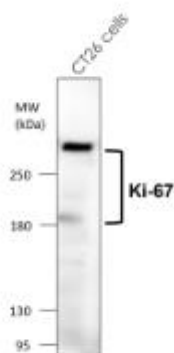
Ki-67 / MKI67antibody [SP6]

Product Name	Ki-67 / MKI67antibody [SP6]
Product Number	JX20001
Host	Rabbit
Clonality	Molyclonal
Application	WB, ICC/IF, IHC-P
Species Reactivity	Human, Mouse, Rat
Isotype	IgG
Storage	Store as concentrated solution. Centrifuge briefly prior to opening vial. For short-term storage (1-2 weeks), store at 4°C. For long-term storage, aliquot and store at -20°C or below. Avoid multiple freeze-thaw cycles.
Storage Buffer	100mM Tris Glycine, 1% BSA, 20% Glycerol (pH7) contains 0.025% ProClin 300
Form	Liquid
Recommended Applications Dilutions	Western Blot 1:500 Immunocytochemistry / Immunofluorescence 1:100–1:200 Immunohistochemistry (Paraffin) 1:100–1:200
Notes	Gently mix before use. Optimal concentrations and conditions for each application should be determined by the user.

WB analysis of various sample extracts using JX20001 Ki-67 / MKI67antibody [SP6].

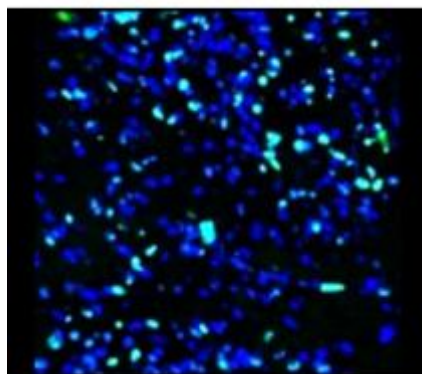
Loading amount: 60 µg per lane

Dilution: 1:500



IHC-P analysis of mouse heart tissue section using JX20001 Ki-67 / MKI67antibody [SP6].

Dilution: 1:100



IHC-P analysis of mouse liver tissue section using JX20001 Ki-67 / MKI67antibody [SP6].

Dilution: 1:100

