



Catalog Number: JX10209

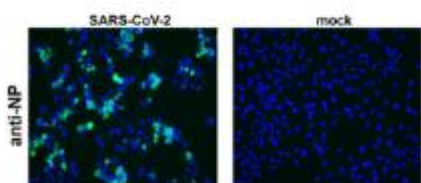
Package size: 25, 100µl

**SARS-CoV-2 (COVID-19) nucleocapsid antibody**

Store at: -20°C

|   |  |
|---|--|
| <b>Product Name</b>                       | SARS-CoV-2 (COVID-19) nucleocapsid antibody  |
| <b>Product Number</b>                     | JX10209  |
| <b>Host</b>                               | Rabbit   |
| <b>Clonality</b>                          | Polyclonal   |
| <b>Application</b>                        | WB, ICC/IF, Neutralization   |
| <b>Species Reactivity</b>                 | Virus  |
| <b>Isotype</b>                            | IgG  |
| <b>Storage</b>                            | Store as concentrated solution. Centrifuge briefly prior to opening vial. For short-term storage (1-2 weeks), store at 4°C. For long-term storage, aliquot and store at -20°C or below. Avoid multiple freeze-thaw cycles. |
| <b>Storage Buffer</b>                     | 100mM Tris Glycine, 20% Glycerol (pH7) contains 0.025% ProClin 300   |
| <b>Form</b>                               | Liquid   |
| <b>Recommended Applications Dilutions</b> | Western Blot 1:3000-1:5000<br>Immunocytochemistry / Immunofluorescence 1:500-1:1000  |
| <b>Notes</b>                              | Gently mix before use. Optimal concentrations and conditions for each application should be determined by the user.  |

ICC/IF analysis of cells using JX10209 SARS-CoV-2 (COVID-19) nucleocapsid antibody (Green) counterstained with DAPI (blue).  
Dilution: 1:500



WB analysis of various sample extracts using JX10209 SARS-CoV-2 (COVID-19) nucleocapsid antibody.  
Loading amount: 30 µg per lane  
Dilution: 1:3000

