

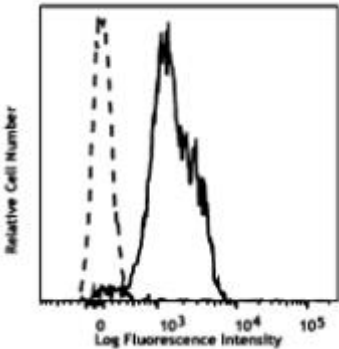
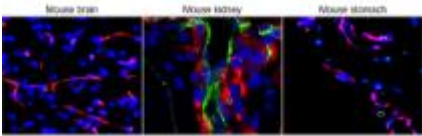
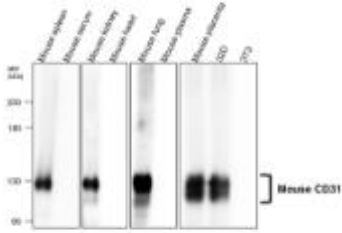
Catalog Number: JX10202

Package size: 25, 100µl

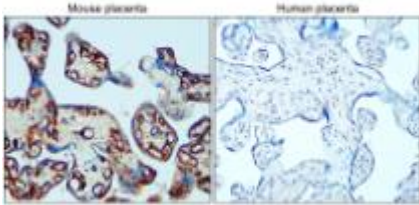
Store at: -20°C

CD31 (mouse specific) antibody

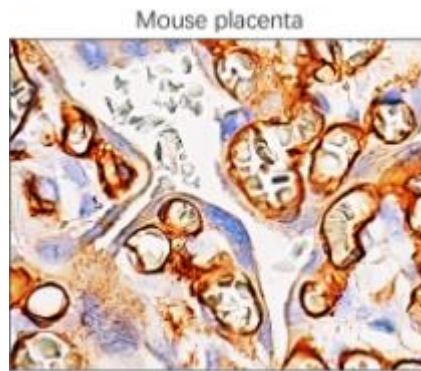
Product Name	CD31 (mouse specific) antibody
Product Number	JX10202
Host	Rabbit
Clonality	Polyclonal
Application	WB, ICC/IF, IHC-P, IHC-fr, Flow cytometry
Species Reactivity	Mouse
Isotype	IgG
Storage	Store as concentrated solution. Centrifuge briefly prior to opening vial. For short-term storage (1-2 weeks), store at 4°C. For long-term storage, aliquot and store at -20°C or below. Avoid multiple freeze-thaw cycles.
Storage Buffer	100mM Tris Glycine, 20% Glycerol (pH7) contains 0.025% ProClin 300
Form	Liquid
Recommended Applications Dilutions	Western Blot 1:500– 1:1500 Immunocytochemistry / Immunofluorescence 1:300 – 1:500 Immunohistochemistry (Frozen) 1:100 – 1:300 Immunohistochemistry (Paraffin) 1:100 – 1:300 Flow Cytometry 1:50 – 1:150
Notes	Gently mix before use. Optimal concentrations and conditions for each application should be determined by the user.

<p>Flow cytometry analysis of mouse splenocytes using JX10202 CD31 (mouse specific) antibody.</p>	<p>IHC-fr analysis of mouse tissue section using JX10202 CD31 (mouse specific) antibody counterstained with DAPI (blue). Dilution: 1:200</p>	<p>WB analysis of various sample extracts using JX10202 CD31 (mouse specific) antibody. Loading amount: 30 µg per lane</p>
		

IHC-P analysis of mouse and human placenta tissue section using JX10202 CD31 (mouse specific) antibody.
Dilution: 1:200



IHC-P analysis of mouse placenta tissue section using JX10202 CD31 (mouse specific) antibody.
Dilution: 1:200



IHC-P analysis of mouse placenta tissue section using JX10202 CD31 (mouse specific) antibody.
Dilution: 1:200

