

Catalog Number: JX10200

Package size: 25, 100µl

Store at: -20°C

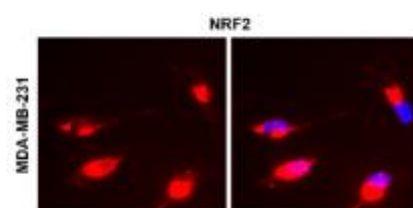
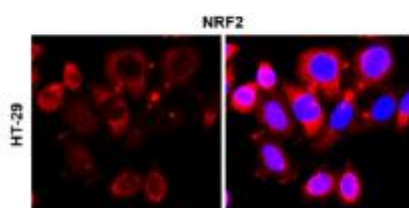
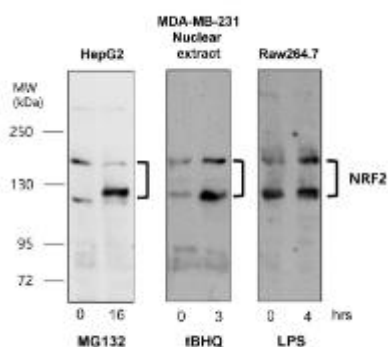
## α-Smooth Muscle Actin antibody

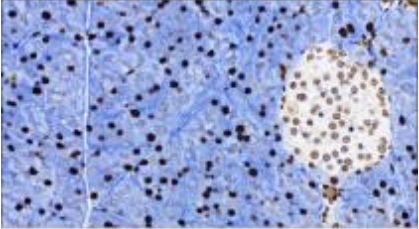
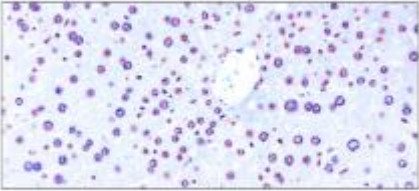
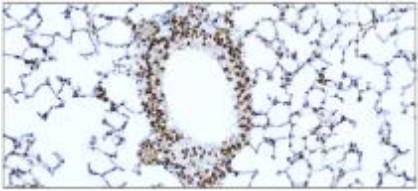
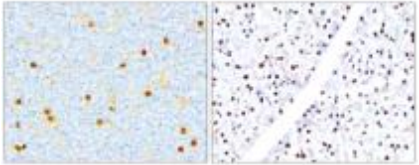
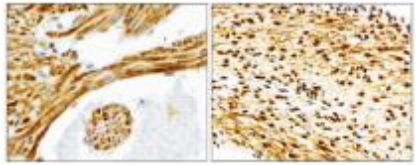
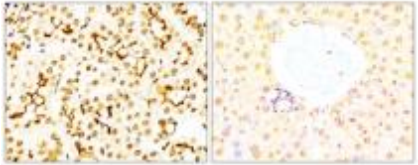
<b>Product Name</b>	α-Smooth Muscle Actin antibody
<b>Product Number</b>	JX10200
<b>Host</b>	Rabbit
<b>Clonality</b>	Polyclonal
<b>Application</b>	WB, ICC/IF, IHC-P, IHC-Fr
<b>Species Reactivity</b>	Human, Mouse, Rat
<b>Isotype</b>	IgG
<b>Storage</b>	Store as concentrated solution. Centrifuge briefly prior to opening vial. For short-term storage (1-2 weeks), store at 4°C. For long-term storage, aliquot and store at -20°C or below. Avoid multiple freeze-thaw cycles.
<b>Storage Buffer</b>	100mM Tris Glycine, 20% Glycerol (pH7) contains 0.025% ProClin 300
<b>Form</b>	Liquid
<b>Recommended Applications Dilutions</b>	Western Blot 1:1000-1:3000 Immunocytochemistry / Immunofluorescence 1:200-1:500 Immunohistochemistry (Paraffin) 1:100-1:400 Immunohistochemistry (Frozen) 1:100-1:200
<b>Notes</b>	Gently mix before use. Optimal concentrations and conditions for each application should be determined by the user.

IHC-fr analysis of tissue section using JX10200 α-Smooth Muscle Actin antibody.  
Dilution: 1:200

WB analysis of various sample extracts using JX10200 α-Smooth Muscle Actin antibody.  
Loading amount: 35 µg per lane  
Dilution: 1:2000

ICC/IF analysis of 4% paraformaldehyde fixed cells using JX10200 α-Smooth Muscle Actin antibody (Red) counterstained with DAPI (blue).  
Permeabilization: 0.1% NP-40 for 10 min at RT  
Dilution: 1:400



<p>ICC/IF analysis of 4% paraformaldehyde fixed cells using JX10200 <math>\alpha</math>-Smooth Muscle Actin antibody counterstained with DAPI (blue). Permeabilization: 0.1% NP-40 for 10 min at RT Dilution: 1:400</p>	<p>IHC-P analysis of human cancer tissue section using JX10200 <math>\alpha</math>-Smooth Muscle Actin antibody. Dilution: 1:200</p>	<p>IHC-P analysis of human cancer tissue section using JX10200 <math>\alpha</math>-Smooth Muscle Actin antibody. Dilution: 1:200</p>
		
<p>IHC-P analysis of human cancer tissue section using JX10200 <math>\alpha</math>-Smooth Muscle Actin antibody. Dilution: 1:200</p>	<p>IHC-P analysis of mouse tissue section using JX10200 <math>\alpha</math>-Smooth Muscle Actin antibody. Dilution: 1:300</p>	<p>IHC-P analysis of mouse tissue section using JX10200 <math>\alpha</math>-Smooth Muscle Actin antibody. Dilution: 1:300</p>
		
<p>IHC-P analysis of mouse tissue section using JX10200 <math>\alpha</math>-Smooth Muscle Actin antibody. Dilution: 1:300</p>		
