

Catalog Number: JX10185

Package size: 25, 100µl

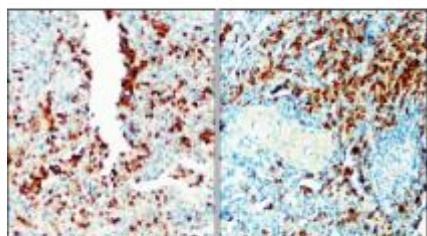
Store at: -20°C

## Toll-like Receptor 9 / TLR9 antibody

<b>Product Name</b>	Toll-like Receptor 9 / TLR9 antibody
<b>Product Number</b>	JX10185
<b>Host</b>	Rabbit
<b>Clonality</b>	Polyclonal
<b>Application</b>	WB, ICC/IF, IHC-P
<b>Species Reactivity</b>	Human
<b>Isotype</b>	IgG
<b>Storage</b>	Store as concentrated solution. Centrifuge briefly prior to opening vial. For short-term storage (1-2 weeks), store at 4°C. For long-term storage, aliquot and store at -20°C or below. Avoid multiple freeze-thaw cycles.
<b>Storage Buffer</b>	100mM Tris Glycine, 1% BSA, 20% Glycerol (pH7) contains 0.025% ProClin 300
<b>Form</b>	Liquid
<b>Recommended Applications Dilutions</b>	Western Blot 1:500- 1:1000 Immunocytochemistry / Immunofluorescence 1:200– 1:400 Immunohistochemistry (Paraffin) 1:150
<b>Notes</b>	Gently mix before use. Optimal concentrations and conditions for each application should be determined by the user.

IHC-P analysis of human tonsil cancer tissue section using JX10185 Toll-like Receptor 9 / TLR9 antibody.

Dilution: 1:150



WB analysis of various sample extracts using JX10185 Toll-like Receptor 9 / TLR9 antibody.

Loading amount: 40 µg per lane

Dilution: 1:1000

