



Catalog Number: JX10178

Package size: 25, 100µl

Store at: -20°C

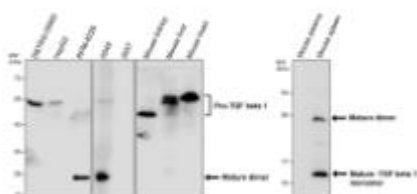
TGF beta 1 antibody

Product Name	TGF beta 1 antibody
Product Number	JX10178
Host	Rabbit
Clonality	Polyclonal
Application	WB, ICC/IF, IHC-P
Species Reactivity	Human, Mouse, Rat
Isotype	IgG
Storage	Store as concentrated solution. Centrifuge briefly prior to opening vial. For short-term storage (1-2 weeks), store at 4°C. For long-term storage, aliquot and store at -20°C or below. Avoid multiple freeze-thaw cycles.
Storage Buffer	100mM Tris Glycine, 20% Glycerol (pH7) contains 0.025% ProClin 300
Form	Liquid
Recommended Applications Dilutions	Western Blot 1:1000 Immunocytochemistry / Immunofluorescence 1:200 – 1:500 Immunohistochemistry (Paraffin) 1:100 – 1:300
Notes	Gently mix before use. Optimal concentrations and conditions for each application should be determined by the user.

WB analysis of various sample extracts using JX10178 TGF beta 1 antibody.

Loading amount: 35 µg per lane

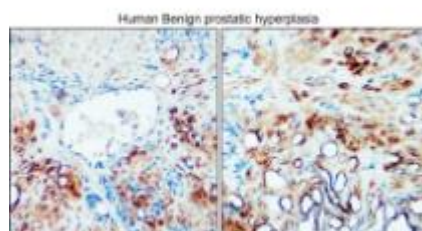
Dilution: 1:1000



IHC-P analysis of human benign prostatic hyperplasia tissue section using JX10178

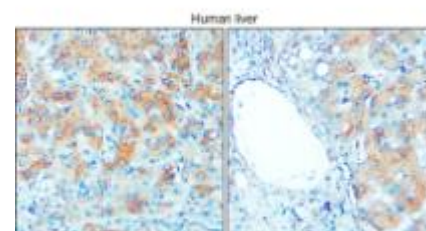
TGF beta 1 antibody.

Dilution: 1:100



IHC-P analysis of human liver tissue section using JX10178 TGF beta 1 antibody.

Dilution: 1:100



IHC-P analysis of human lung tissue section using JX10178 TGF beta 1 antibody.
Dilution: 1:100

IHC-P analysis of human skin tissue section using JX10178 TGF beta 1 antibody.
Dilution: 1:100

IHC-P analysis of human thyroid tissue section using JX10178 TGF beta 1 antibody.
Dilution: 1:100

