



Catalog Number: JX10169

Package size: 25, 100µl

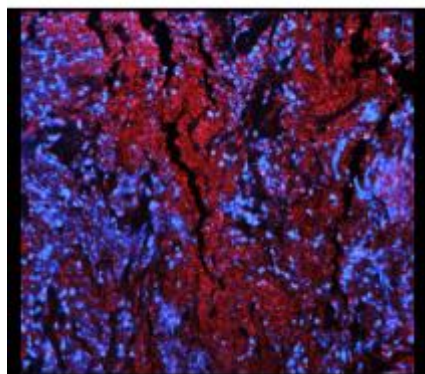
Store at: -20°C

ST3GAL1 / SIAT4A antibody

Product Name	ST3GAL1 / SIAT4A antibody
Product Number	JX10169
Host	Rabbit
Clonality	Polyclonal
Application	WB, ICC/IF, IHC-P
Species Reactivity	Human, Mouse, Rat
Isotype	IgG
Storage	Store as concentrated solution. Centrifuge briefly prior to opening vial. For short-term storage (1-2 weeks), store at 4°C. For long-term storage, aliquot and store at -20°C or below. Avoid multiple freeze-thaw cycles.
Storage Buffer	100mM Tris Glycine, 20% Glycerol (pH7) contains 0.025% ProClin 300
Form	Liquid
Recommended Applications Dilutions	Western Blot 1:1000-1:2000 Immunocytochemistry / Immunofluorescence 1:300-1:600 Immunohistochemistry (Paraffin) 1:100-1:200
Notes	Gently mix before use. Optimal concentrations and conditions for each application should be determined by the user.

IHC-fr analysis of tissue section using JX10169 ST3GAL1 / SIAT4A antibody (Red).

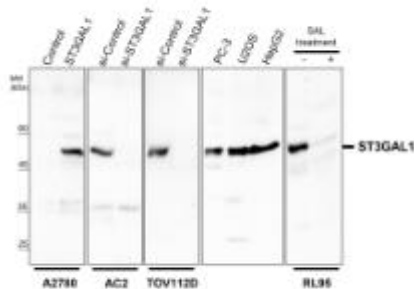
Dilution: 1:200



WB analysis of various sample extracts using JX10169 ST3GAL1 / SIAT4A antibody.

Loading amount: 35 µg per lane

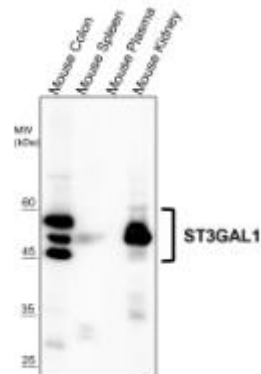
Dilution: 1:1000

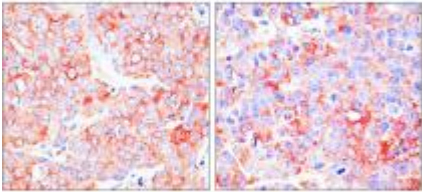
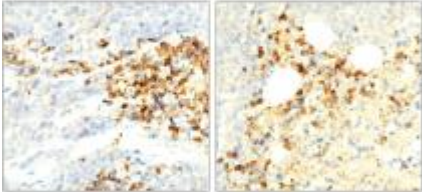
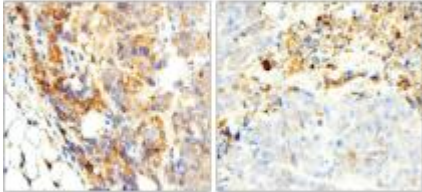
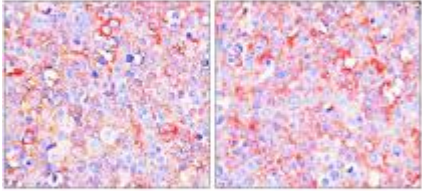
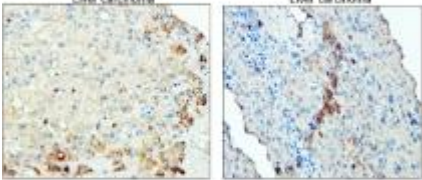


WB analysis of various sample extracts using JX10169 ST3GAL1 / SIAT4A antibody.

Loading amount: 35 µg per lane

Dilution: 1:1000



<p>IHC-P analysis of human cancer tissue section using JX10169 ST3GAL1 / SIAT4A antibody. Dilution: 1:100</p>	<p>IHC-P analysis of human cancer tissue section using JX10169 ST3GAL1 / SIAT4A antibody. Dilution: 1:100</p>	<p>IHC-P analysis of human cancer tissue section using JX10169 ST3GAL1 / SIAT4A antibody. Dilution: 1:100</p>
		
<p>IHC-P analysis of human cancer tissue section using JX10169 ST3GAL1 / SIAT4A antibody. Dilution: 1:100</p>	<p>IHC-P analysis of human cancer tissue section using JX10169 ST3GAL1 / SIAT4A antibody. Dilution: 1:100</p>	<p>IHC-P analysis of human cancer tissue section using JX10169 ST3GAL1 / SIAT4A antibody. Dilution: 1:100</p>
	<p>Liver carcinoma Liver carcinoma</p> 	<p>Breast carcinoma Liver carcinoma</p> 