



Catalog Number: JX10166

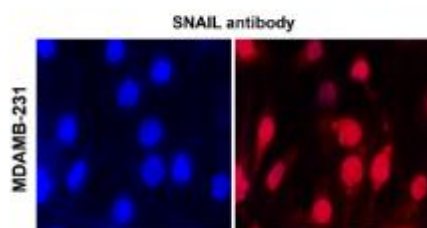
Package size: 25, 100µl

Store at: -20°C

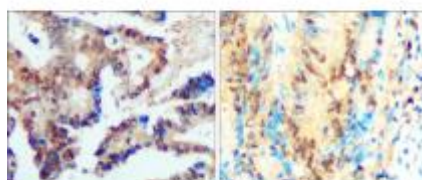
SNAIL antibody

| | |
|---|--|
| Product Name | SNAIL antibody |
| Product Number | JX10166 |
| Host | Rabbit |
| Clonality | Polyclonal |
| Application | WB, ICC/IF, IHC-P |
| Species Reactivity | Human, Mouse |
| Isotype | IgG |
| Storage | Store as concentrated solution. Centrifuge briefly prior to opening vial. For short-term storage (1-2 weeks), store at 4°C. For long-term storage, aliquot and store at -20°C or below. Avoid multiple freeze-thaw cycles. |
| Storage Buffer | 100mM Tris Glycine, 20% Glycerol (pH7) contains 0.025% ProClin 300 |
| Form | Liquid |
| Recommended Applications Dilutions | Western Blot 1:1000 Immunocytochemistry / Immunofluorescence 1:200-1:400 Immunohistochemistry (Paraffin) 1:100-1:300 |
| Notes | Gently mix before use. Optimal concentrations and conditions for each application should be determined by the user. |

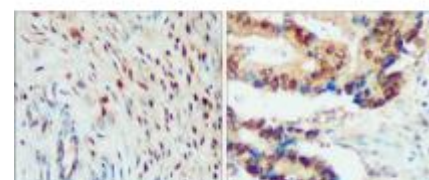
ICC/IF analysis of 4% paraformaldehyde fixed cells using JX10166 SNAIL antibody (Red) counterstained with DAPI (blue).
Permeabilization: 0.1% NP-40 for 10 min at RT
Dilution: 1:200



IHC-P analysis of human cancer tissue section using JX10166 SNAIL antibody.
Dilution: 1:300



IHC-P analysis of human cancer tissue section using JX10166 SNAIL antibody.
Dilution: 1:300



WB analysis of various sample extracts
using JX10166 SNAIL antibody.
Loading amount: 50 µg per lane
Dilution: 1:1000

WB analysis of various sample extracts
using JX10166 SNAIL antibody.
Loading amount: 35 µg per lane
Dilution: 1:3000

