

Catalog Number: JX10159

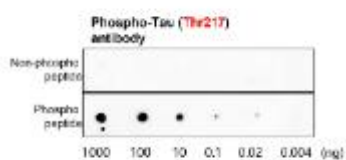
Package size: 25, 100µl

Store at: -20°C

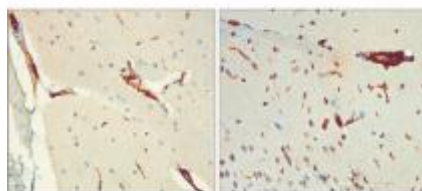
Phospho Tau (Thr217) antibody

Product Name	Phospho Tau (Thr217) antibody
Product Number	JX10159
Host	Rabbit
Clonality	Polyclonal
Application	WB, IHC-P
Species Reactivity	Human, Mouse, Rat
Isotype	IgG
Storage	Store as concentrated solution. Centrifuge briefly prior to opening vial. For short-term storage (1-2 weeks), store at 4°C. For long-term storage, aliquot and store at -20°C or below. Avoid multiple freeze-thaw cycles.
Storage Buffer	100mM Tris Glycine, 30% Glycerol (pH7) contains 0.025% ProClin 300
Form	Liquid
Recommended Applications Dilutions	Western Blot 1:500-1:2000 Immunohistochemistry (Paraffin) 1:100–1:200
Notes	Gently mix before use. Optimal concentrations and conditions for each application should be determined by the user.

Dot blot analysis of Phospho-Tau (Thr217) protein extracts using JX10159 Phospho Tau (Thr217) antibody.



IHC-P analysis of human brain tissue section using JX10159 Phospho Tau (Thr217) antibody.
Dilution: 1:100



WB analysis of various sample extracts using JX10159 Phospho Tau (Thr217) antibody.
Loading amount: 55 µg per lane
Dilution: 1:2000

