



Catalog Number: JX10158

Package size: 25, 100µl

Store at: -20°C

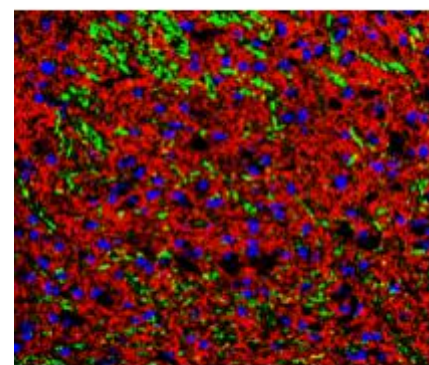
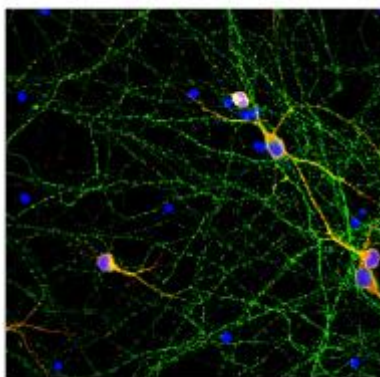
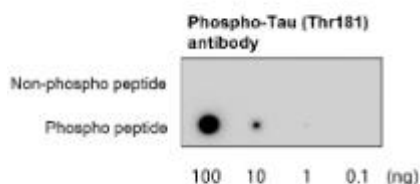
## Phospho Tau (Thr181) antibody

<b>Product Name</b>	Phospho Tau (Thr181) antibody
<b>Product Number</b>	JX10158
<b>Host</b>	Rabbit
<b>Clonality</b>	Polyclonal
<b>Application</b>	WB, ICC/IF, IHC-P, IHC-Fr
<b>Species Reactivity</b>	Human, Mouse, Rat
<b>Isotype</b>	IgG
<b>Storage</b>	Store as concentrated solution. Centrifuge briefly prior to opening vial. For short-term storage (1-2 weeks), store at 4°C. For long-term storage, aliquot and store at -20°C or below. Avoid multiple freeze-thaw cycles.
<b>Storage Buffer</b>	100mM Tris Glycine, 30% Glycerol (pH7) contains 0.025% ProClin 300
<b>Form</b>	Liquid
<b>Recommended Applications Dilutions</b>	Western Blot 1:500-1:1500 Immunocytochemistry / Immunofluorescence 1:200–1:400 Immunohistochemistry (Paraffin) 1:100 Immunohistochemistry (Frozen) 1:200
<b>Notes</b>	Gently mix before use. Optimal concentrations and conditions for each application should be determined by the user.

Dot blot analysis of Phospho-Tau (Thr181) protein extracts using JX10158 Phospho Tau (Thr181) antibody.

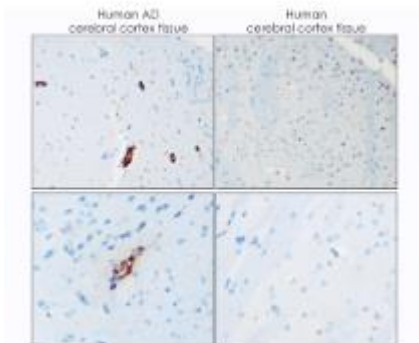
ICC/IF analysis of 4% paraformaldehyde fixed primary cortical neurons using JX10158 Phospho Tau (Thr181) antibody (Red).  
Dilution: 1:200

IHC-fr analysis of tissue section using JX10158 Phospho Tau (Thr181) antibody counterstained with Tuj1 antibody (Red).  
Dilution: 1:200



IHC-P analysis of human tissue section using JX10158 Phospho Tau (Thr181) antibody.

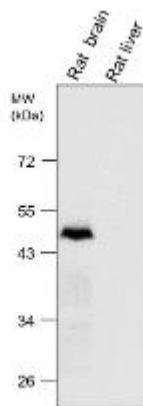
Dilution: 1:100



WB analysis of various sample extracts using JX10158 Phospho Tau (Thr181) antibody.

Loading amount: 55 µg per lane

Dilution: 1:1000



WB analysis of various sample extracts using JX10158 Phospho Tau (Thr181) antibody.

Loading amount: 55 µg per lane

Dilution: 1:1000

