

Catalog Number: JX10154

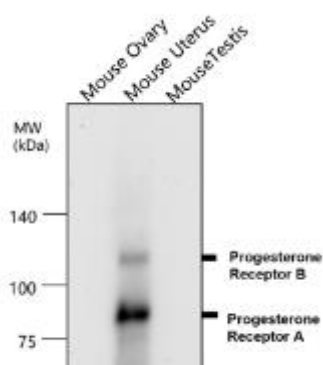
Package size: 25, 100µl

Store at: -20°C

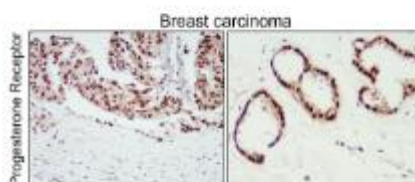
## PGR / Progesterone Receptor antibody

<b>Product Name</b>	PGR / Progesterone Receptor antibody
<b>Product Number</b>	JX10154
<b>Host</b>	Rabbit
<b>Clonality</b>	Polyclonal
<b>Application</b>	WB, IHC-P
<b>Species Reactivity</b>	Human, Mouse, Rat
<b>Isotype</b>	IgG
<b>Storage</b>	Store as concentrated solution. Centrifuge briefly prior to opening vial. For short-term storage (1-2 weeks), store at 4°C. For long-term storage, aliquot and store at -20°C or below. Avoid multiple freeze-thaw cycles.
<b>Storage Buffer</b>	100mM Tris Glycine, 20% Glycerol (pH7) contains 0.025% ProClin 300
<b>Form</b>	Liquid
<b>Recommended Applications Dilutions</b>	Western Blot 1:500-1:1000 Immunohistochemistry (Paraffin) 1:200-1:250
<b>Notes</b>	Gently mix before use. Optimal concentrations and conditions for each application should be determined by the user.

WB analysis of various sample extracts using JX10154 PGR / Progesterone Receptor antibody.  
Loading amount: 60 µg per lane  
Dilution: 1:500



IHC-P analysis of human breast cancer tissue section using JX10154 PGR / Progesterone Receptor antibody.  
Dilution: 1:200



IHC-P analysis of human breast cancer tissue section using JX10154 PGR / Progesterone Receptor antibody.  
Dilution: 1:200

