



Catalog Number: JX10151

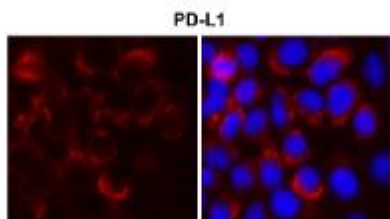
Package size: 25, 100µl

Store at: -20°C

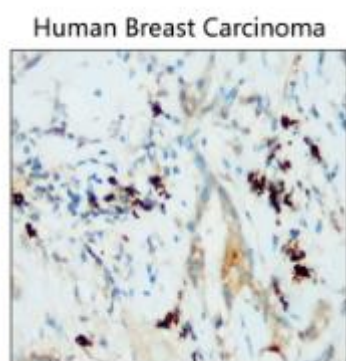
PD-L1 / CD274 antibody

Product Name	PD-L1 / CD274 antibody
Product Number	JX10151
Host	Rabbit
Clonality	Polyclonal
Application	WB, ICC/IF, IHC-P, IP
Species Reactivity	Human
Isotype	IgG
Storage	Store as concentrated solution. Centrifuge briefly prior to opening vial. For short-term storage (1-2 weeks), store at 4°C. For long-term storage, aliquot and store at -20°C or below. Avoid multiple freeze-thaw cycles.
Storage Buffer	100mM Tris Glycine, 50% Glycerol (pH7) contains 0.025% ProClin 300
Form	Liquid
Recommended Applications Dilutions	Western Blot & Immunoprecipitation: Assay dependent (Application guarantee supported by literature) Immunocytochemistry / Immunofluorescence 1:100-1:300 Immunohistochemistry (Paraffin) 1:100-1:250
Notes	Gently mix before use. Optimal concentrations and conditions for each application should be determined by the user.

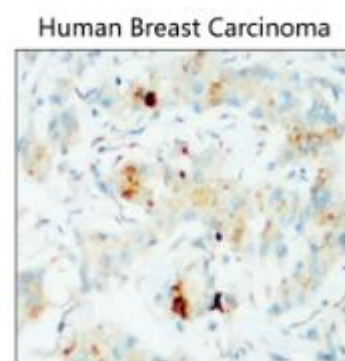
ICC/IF analysis of 4% paraformaldehyde fixed cells using JX10151 PD-L1 / CD274 antibody (Red).
Permeabilization: 0.1% NP-40 for 10 min at RT
Dilution: 1:200



IHC-P analysis of human breast cancer tissue section using JX10151 PD-L1 / CD274 antibody.
Dilution: 1:150



IHC-P analysis of human breast cancer tissue section using JX10151 PD-L1 / CD274 antibody.
Dilution: 1:150



IHC-P analysis of human breast cancer
tissue section using JX10151 PD-L1 /
CD274 antibody.
Dilution: 1:150

Human Breast Carcinoma

