



Catalog Number: JX10145

Package size: 25, 100µl

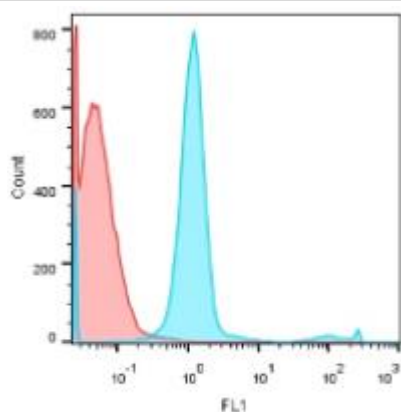
Store at: -20°C

## Pan-Cytokeratin / Pan-CK antibody

<b>Product Name</b>	Pan-Cytokeratin / Pan-CK antibody
<b>Product Number</b>	JX10145
<b>Host</b>	Rabbit
<b>Clonality</b>	Polyclonal
<b>Application</b>	WB, ICC/IF, IHC-P, Flow cytometry
<b>Species Reactivity</b>	Human, Mouse
<b>Isotype</b>	IgG
<b>Storage</b>	Store as concentrated solution. Centrifuge briefly prior to opening vial. For short-term storage (1-2 weeks), store at 4°C. For long-term storage, aliquot and store at -20°C or below. Avoid multiple freeze-thaw cycles.
<b>Storage Buffer</b>	PBS pH7.4, 40% Glycerol contains 0.025% ProClin 300
<b>Form</b>	Liquid
<b>Recommended Applications Dilutions</b>	Western Blot 1:2000–1:5000 Immunocytochemistry / Immunofluorescence 1:400–1:800 Immunohistochemistry (Paraffin) 1:400–1:800 Flow Cytometry 1:300–1:500
<b>Notes</b>	Gently mix before use. Optimal concentrations and conditions for each application should be determined by the user.

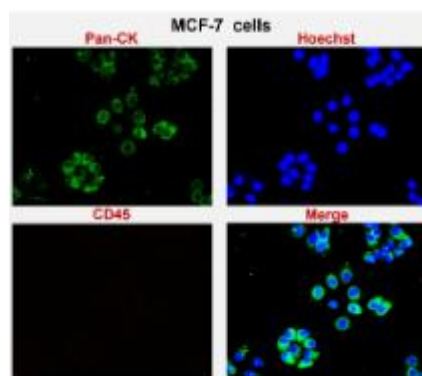
Flow cytometry analysis of MCF-7 cells using JX10145 Pan-Cytokeratin / Pan-CK antibody.

Dilution: 1:350



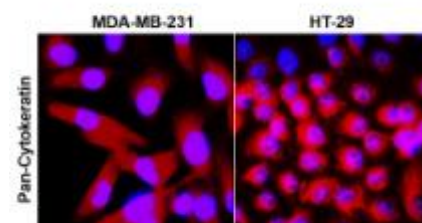
ICC/IF analysis of 4% paraformaldehyde fixed cells using JX10145 Pan-Cytokeratin / Pan-CK antibody (Green) counterstained with DAPI (blue). Permeabilization: 0.1% NP-40 for 10 min at RT Dilution: 1:400

ICC/IF analysis of 4% paraformaldehyde fixed cells using JX10145 Pan-Cytokeratin / Pan-CK antibody (Red) counterstained with DAPI (blue). Permeabilization: 0.1% NP-40 for 10 min at RT Dilution: 1:300



ICC/IF analysis of 4% paraformaldehyde fixed cells using JX10145 Pan-Cytokeratin / Pan-CK antibody (Red) counterstained with DAPI (blue). Permeabilization: 0.1% NP-40 for 10 min at RT Dilution: 1:300

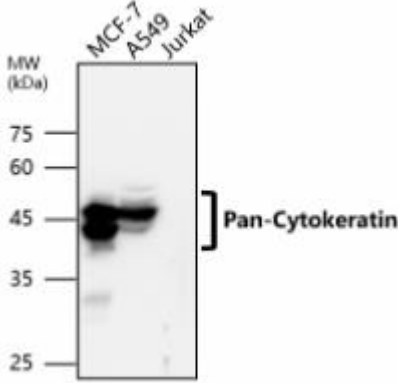
ICC/IF analysis of 4% paraformaldehyde fixed cells using JX10145 Pan-Cytokeratin / Pan-CK antibody (Red) counterstained with DAPI (blue). Permeabilization: 0.1% NP-40 for 10 min at RT Dilution: 1:300



WB analysis of various sample extracts using JX10145 Pan-Cytokeratin / Pan-CK antibody.

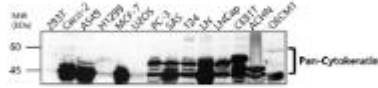
Loading amount: 45 µg per lane

Dilution: 1:3000



WB analysis of various sample extracts using JX10145 Pan-Cytokeratin / Pan-CK antibody.

Dilution: 1:3000

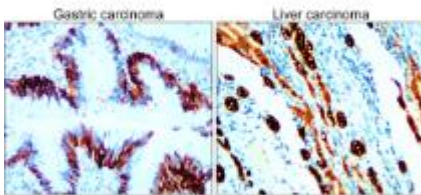


IHC-P analysis of tissue section using JX10145 Pan-Cytokeratin / Pan-CK antibody. Side by side with VANTANA IVD grade antibody



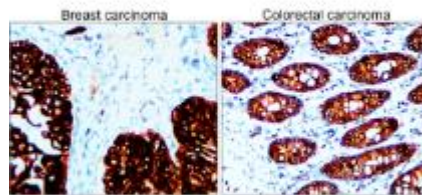
IHC-P analysis of human cancer tissue section using JX10145 Pan-Cytokeratin / Pan-CK antibody.

Dilution: 1:400



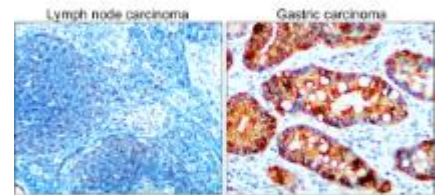
IHC-P analysis of human cancer tissue section using JX10145 Pan-Cytokeratin / Pan-CK antibody.

Dilution: 1:400



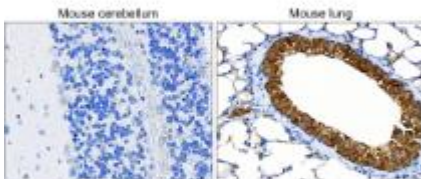
IHC-P analysis of human cancer tissue section using JX10145 Pan-Cytokeratin / Pan-CK antibody.

Dilution: 1:400



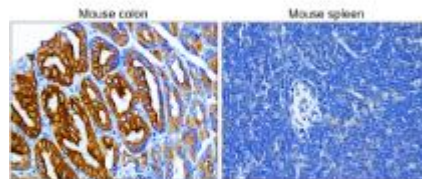
IHC-P analysis of mouse tissue section using JX10145 Pan-Cytokeratin / Pan-CK antibody.

Dilution: 1:400



IHC-P analysis of mouse tissue section using JX10145 Pan-Cytokeratin / Pan-CK antibody.

Dilution: 1:400



IHC-P analysis of mouse tissue section using JX10145 Pan-Cytokeratin / Pan-CK antibody.

Dilution: 1:400

