



Catalog Number: JX10124

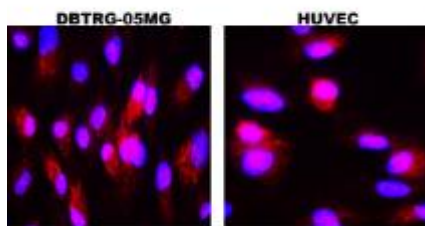
Package size: 25, 100µl

Store at: -20°C

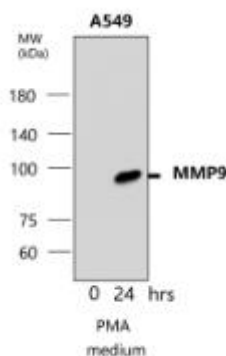
MMP9 antibody

Product Name	MMP9 antibody
Product Number	JX10124
Host	Rabbit
Clonality	Polyclonal
Application	WB, ICC/IF, IHC-P
Species Reactivity	Human
Isotype	IgG
Storage	Store as concentrated solution. Centrifuge briefly prior to opening vial. For short-term storage (1-2 weeks), store at 4°C. For long-term storage, aliquot and store at -20°C or below. Avoid multiple freeze-thaw cycles.
Storage Buffer	100mM Tris Glycine, 20% Glycerol (pH7) contains 0.025% ProClin 300
Form	Liquid
Recommended Applications Dilutions	Western Blot 1:500 Immunocytochemistry / Immunofluorescence 1:200-1:500 Immunohistochemistry (Paraffin) 1:100-1:200
Notes	Gently mix before use. Optimal concentrations and conditions for each application should be determined by the user.

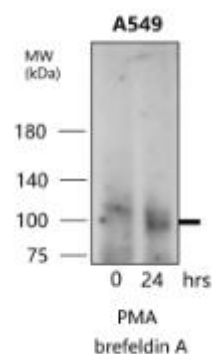
ICC/IF analysis of 4% paraformaldehyde fixed cells using JX10124 MMP9 antibody (Red) counterstained with DAPI (blue).
Permeabilization: 0.1% NP-40 for 10 min at RT
Dilution: 1:250



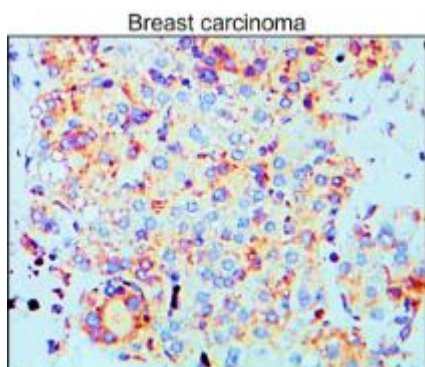
WB analysis of various sample extracts using JX10124 MMP9 antibody.
Loading amount: 60 µg per lane
Dilution: 1:500



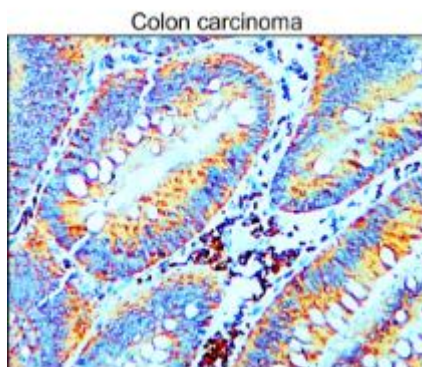
WB analysis of various sample extracts using JX10124 MMP9 antibody.
Loading amount: 60 µg per lane
Dilution: 1:500



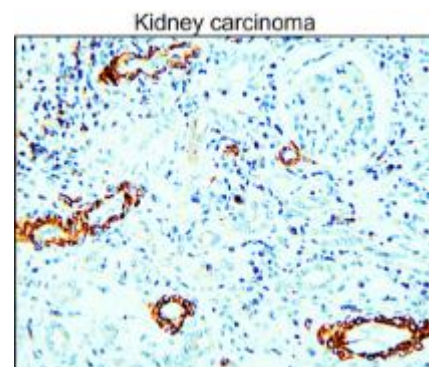
IHC-P analysis of human breast cancer tissue section using JX10124 MMP9 antibody.
Dilution: 1:100



IHC-P analysis of human colon cancer tissue section using JX10124 MMP9 antibody.
Dilution: 1:100



IHC-P analysis of human kidney cancer tissue section using JX10124 MMP9 antibody.
Dilution: 1:100



IHC-P analysis of human kidney cancer tissue section using JX10124 MMP9 antibody.
Dilution: 1:100

