



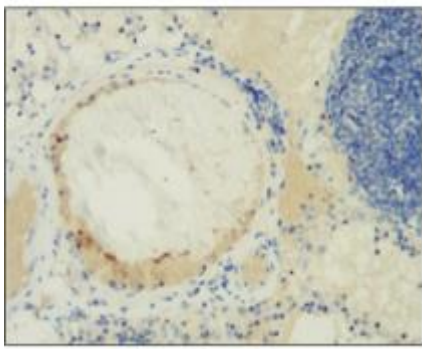
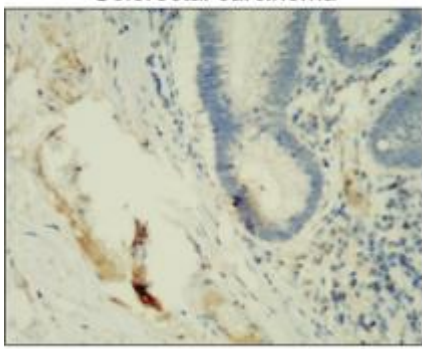
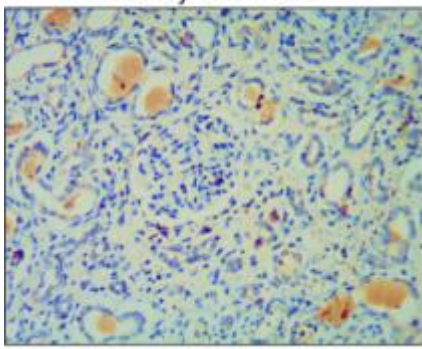
Catalog Number: JX10121

Package size: 25, 100µl

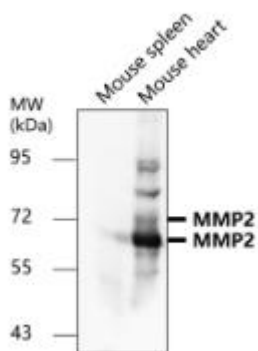
Store at: -20°C

MMP2 antibody

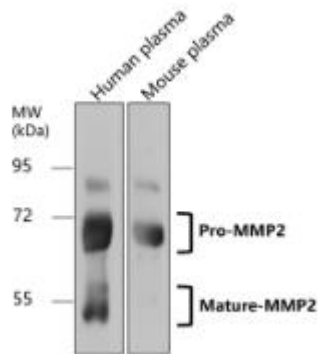
Product Name	MMP2 antibody
Product Number	JX10121
Host	Rabbit
Clonality	Polyclonal
Application	WB, ICC/IF, IHC-P
Species Reactivity	Human, Mouse, Rat
Isotype	IgG
Storage	Store as concentrated solution. Centrifuge briefly prior to opening vial. For short-term storage (1-2 weeks), store at 4°C. For long-term storage, aliquot and store at -20°C or below. Avoid multiple freeze-thaw cycles.
Storage Buffer	100mM Tris Glycine, 1% BSA, 20% Glycerol (pH7) contains 0.025% ProClin 300
Form	Liquid
Recommended Applications Dilutions	Western Blot 1:500 Immunocytochemistry / Immunofluorescence 1: 100-1:200 Immunohistochemistry (Paraffin) 1: 50-1:100
Notes	Gently mix before use. Optimal concentrations and conditions for each application should be determined by the user.

IHC-P analysis of human breast cancer tissue section using JX10121 MMP2 antibody. Dilution: 1:50	IHC-P analysis of human colorectal cancer tissue section using JX10121 MMP2 antibody. Dilution: 1:50	IHC-P analysis of human kidney cancer tissue section using JX10121 MMP2 antibody. Dilution: 1:50
<p style="text-align: center;">Breast carcinoma</p> 	<p style="text-align: center;">Colorectal carcinoma</p> 	<p style="text-align: center;">Kidney carcinoma</p> 

WB analysis of various sample extracts using JX10121 MMP2 antibody.
Loading amount: 60 µg per lane
Dilution: 1:500



WB analysis of various sample extracts using JX10121 MMP2 antibody.
Loading amount: 60 µg per lane
Dilution: 1:500



WB analysis of various sample extracts using JX10121 MMP2 antibody.
Loading amount: 60 µg per lane
Dilution: 1:500

