



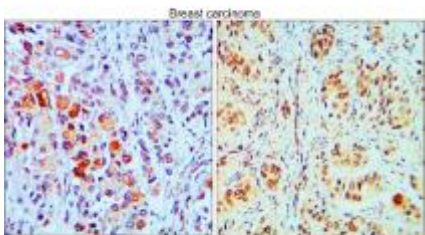
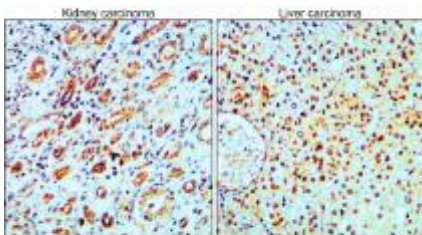
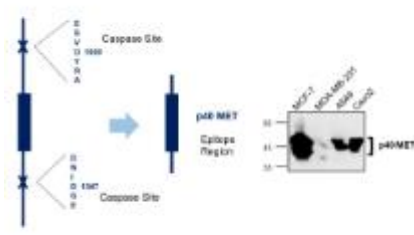
Catalog Number: JX10118

Package size: 25, 100µl

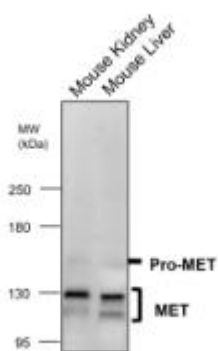
Store at: -20°C

C-MET / HGFR antibody

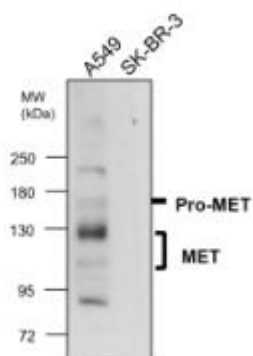
Product Name	C-MET / HGFR antibody
Product Number	JX10118
Host	Rabbit
Clonality	Polyclonal
Application	WB, ICC/IF, IHC-P
Species Reactivity	Human, Mouse, Rat
Isotype	IgG
Storage	Store as concentrated solution. Centrifuge briefly prior to opening vial. For short-term storage (1-2 weeks), store at 4°C. For long-term storage, aliquot and store at -20°C or below. Avoid multiple freeze-thaw cycles.
Storage Buffer	100mM Tris Glycine, 20% Glycerol (pH7) contains 0.025% ProClin 300
Form	Liquid
Recommended Applications Dilutions	Western Blot 1:500–1:1000 Immunocytochemistry / Immunofluorescence 1:100–1:200 Immunohistochemistry (Paraffin) 1:100
Notes	Gently mix before use. Optimal concentrations and conditions for each application should be determined by the user.

IHC-P analysis of human breast cancer tissue section using JX10118 C-MET / HGFR antibody. Dilution: 1:100	IHC-P analysis of human cancer tissue section using JX10118 C-MET / HGFR antibody. Dilution: 1:100	WB analysis of various sample extracts using JX10118 C-MET / HGFR antibody. Loading amount: 50 µg per lane Dilution: 1:1000
		

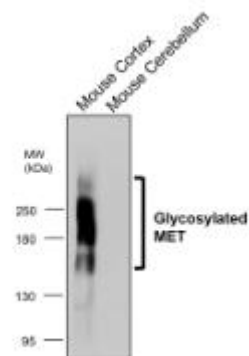
WB analysis of various sample extracts using JX10118 C-MET / HGFR antibody.
Loading amount: 50 µg per lane
Dilution: 1:700



WB analysis of various sample extracts using JX10118 C-MET / HGFR antibody.
Loading amount: 50 µg per lane
Dilution: 1:700



WB analysis of various sample extracts using JX10118 C-MET / HGFR antibody.
Loading amount: 50 µg per lane
Dilution: 1:800



WB analysis of various sample extracts using JX10118 C-MET / HGFR antibody.
Loading amount: 50 µg per lane
Dilution: 1:800

