



Catalog Number: JX10117

Package size: 25, 100µl

Store at: -20°C

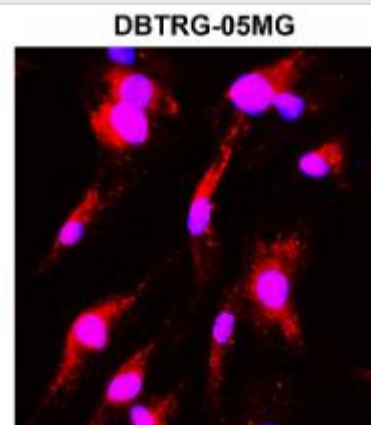
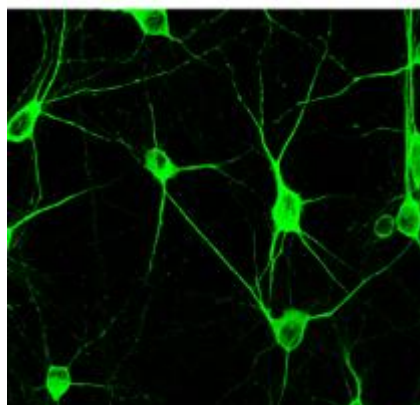
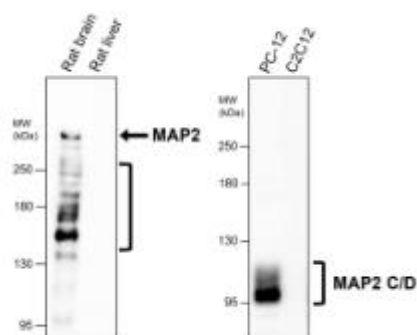
MAP2 antibody

Product Name	MAP2 antibody
Product Number	JX10117
Host	Rabbit
Clonality	Polyclonal
Application	WB, ICC/IF, IHC-P
Species Reactivity	Human, Mouse, Rat
Isotype	IgG
Storage	Store as concentrated solution. Centrifuge briefly prior to opening vial. For short-term storage (1-2 weeks), store at 4°C. For long-term storage, aliquot and store at -20°C or below. Avoid multiple freeze-thaw cycles.
Storage Buffer	100mM Tris Glycine, 1% BSA, 20% Glycerol (pH7) contains 0.025% ProClin 300
Form	Liquid
Recommended Applications Dilutions	Western Blot 1:500-1:1000 Immunocytochemistry / Immunofluorescence 1:200-1:300 Immunohistochemistry (Paraffin) 1:100-1:150
Notes	Gently mix before use. Optimal concentrations and conditions for each application should be determined by the user.

WB analysis of various sample extracts using JX10117 MAP2 antibody.
Loading amount: 60 µg per lane
Dilution: 1:500

ICC/IF analysis of 4% paraformaldehyde fixed cells using JX10117 C114Customer feedback Image IR12-33 anti-MAP2 antibody IF-01MAP2 antibody (Red) counterstained with DAPI (blue).
Permeabilization: 0.1% NP-40 for 10 min at RT Dilution: 1:200

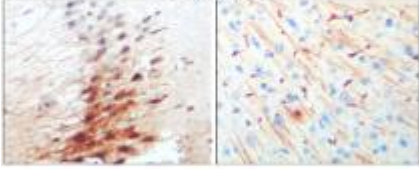
ICC/IF analysis of 4% paraformaldehyde fixed primary cortical neurons using JX10117 MAP2 antibody.
Dilution: 1:200



IHC-P analysis of human brain tissue section using JX10117 MAP2 antibody.
Dilution: 1:100

IHC-P analysis of mouse brain tissue section using JX10117 MAP2 antibody.
Dilution: 1:100

Human brain



Mouse brain

