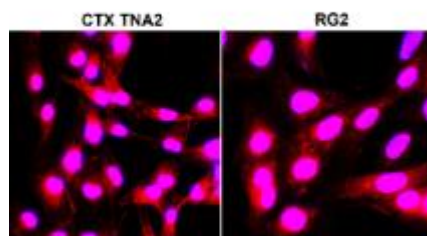


Catalog Number: JX10114
Package size: 25, 100µl
Store at: -20°C

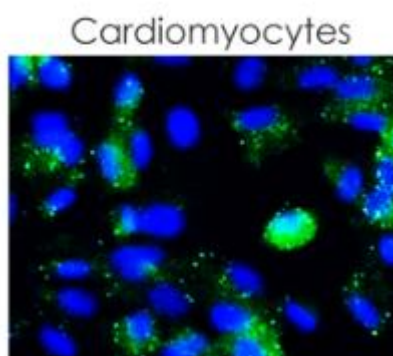
LC3B antibody

Product Name	LC3B antibody
Product Number	JX10114
Host	Rabbit
Clonality	Polyclonal
Application	WB, ICC/IF, IHC-P
Species Reactivity	Human, Mouse, Rat
Isotype	IgG
Storage	Store as concentrated solution. Centrifuge briefly prior to opening vial. For short-term storage (1-2 weeks), store at 4°C. For long-term storage, aliquot and store at -20°C or below. Avoid multiple freeze-thaw cycles.
Storage Buffer	100mM Tris Glycine, 1% BSA, 20% Glycerol (pH7) contains 0.025% ProClin 300
Form	Liquid
Recommended Applications Dilutions	Western Blot 1:1000 – 1:2000 Immunocytochemistry / Immunofluorescence 1:200 – 1:500 Immunohistochemistry (Paraffin) 1:100 – 1:200
Notes	Gently mix before use. Optimal concentrations and conditions for each application should be determined by the user.

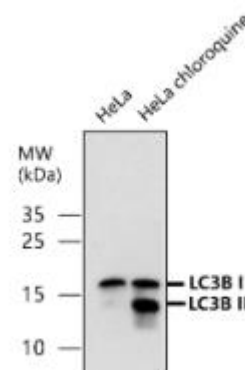
ICC/IF analysis of 4% paraformaldehyde fixed cells using JX10114 LC3B antibody (Red) counterstained with DAPI (blue).
Permeabilization: 0.1% NP-40 for 10 min at RT
Dilution: 1:200



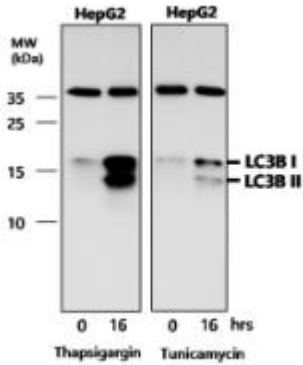
ICC/IF analysis of 4% paraformaldehyde fixed cells using JX10114 LC3B antibody (Green) counterstained with DAPI (blue).
Permeabilization: 0.1% NP-40 for 10 min at RT
Dilution: 1:200



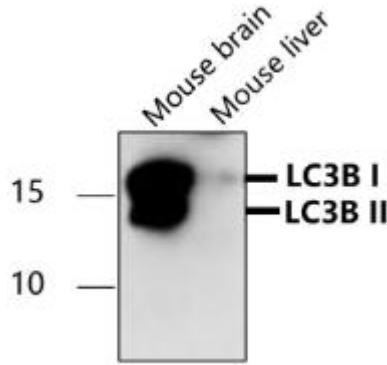
WB analysis of various sample extracts using JX10114 LC3B antibody.
Loading amount: 50 µg per lane
Dilution: 1:1000



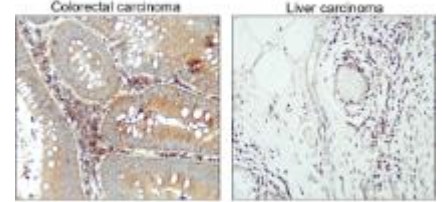
WB analysis of various sample extracts using JX10114 LC3B antibody.
 Loading amount: 50 µg per lane
 Dilution: 1:1000



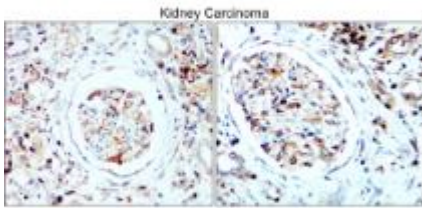
WB analysis of various sample extracts using JX10114 LC3B antibody.
 Loading amount: 50 µg per lane
 Dilution: 1:1000



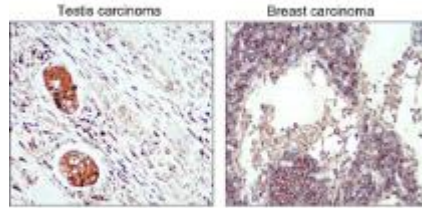
IHC-P analysis of human colorectal and liver cancer tissue section using JX10114 LC3B antibody.
 Dilution: 1:100



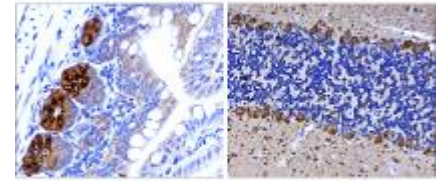
IHC-P analysis of human kidney cancer tissue section using JX10114 LC3B antibody.
 Dilution: 1:100



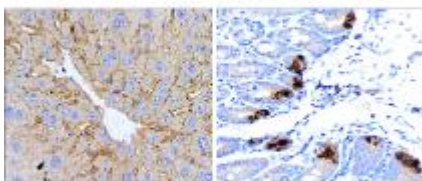
IHC-P analysis of human testis and breast cancer tissue section using JX10114 LC3B antibody.
 Dilution: 1:100



IHC-P analysis of mouse tissue section using JX10114 LC3B antibody.
 Dilution: 1:200



IHC-P analysis of mouse tissue section using JX10114 LC3B antibody.
 Dilution: 1:200



IHC-P analysis of mouse tissue section using JX10114 LC3B antibody.
 Dilution: 1:200

