

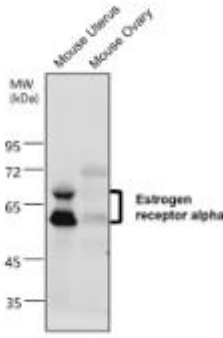
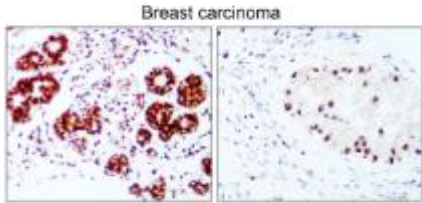
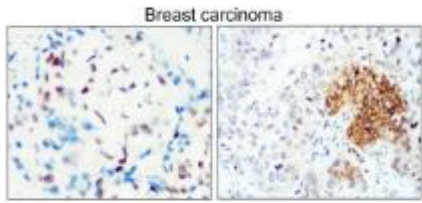
Catalog Number: JX10088

Package size: 25, 100µl

Store at: -20°C

Estrogen receptor alpha / ESR1 antibody

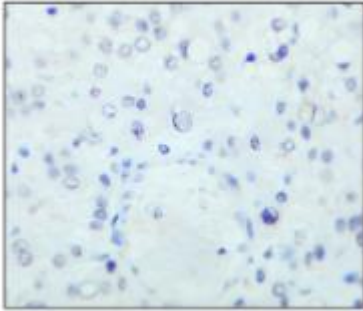
Product Name	Estrogen receptor alpha / ESR1 antibody
Product Number	JX10088
Host	Rabbit
Clonality	Polyclonal
Application	WB, IHC-P
Species Reactivity	Human, Mouse, Rat
Isotype	IgG
Storage	Store as concentrated solution. Centrifuge briefly prior to opening vial. For short-term storage (1-2 weeks), store at 4°C. For long-term storage, aliquot and store at -20°C or below. Avoid multiple freeze-thaw cycles.
Storage Buffer	100mM Tris Glycine, 20% Glycerol (pH7) contains 0.025% ProClin 300
Form	Liquid
Recommended Applications Dilutions	Western Blot 1:500-1:1000 Immunohistochemistry (Paraffin) 1:200 – 1:250
Notes	Gently mix before use. Optimal concentrations and conditions for each application should be determined by the user.

<p>WB analysis of various sample extracts using JX10088 Estrogen receptor alpha / ESR1 antibody.</p> <p>Loading amount: 60 µg per lane</p> <p>Dilution: 1:800</p>	<p>IHC-P analysis of human cancer tissue section using JX10088 Estrogen receptor alpha / ESR1 antibody.</p> <p>Dilution: 1:200</p>	<p>IHC-P analysis of human cancer tissue section using JX10088 Estrogen receptor alpha / ESR1 antibody.</p> <p>Dilution: 1:200</p>
		
<p>IHC-P analysis of human cancer tissue section using JX10088 Estrogen receptor alpha / ESR1 antibody.</p>	<p>IHC-P analysis of human cancer tissue section using JX10088 Estrogen receptor alpha / ESR1 antibody.</p>	

Dilution: 1:200

Dilution: 1:200

Liver carcinoma



Kidney carcinoma

