



Catalog Number: JX10084

Package size: 25, 100µl

Store at: -20°C

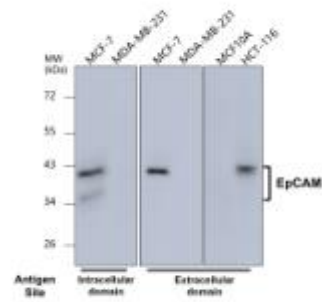
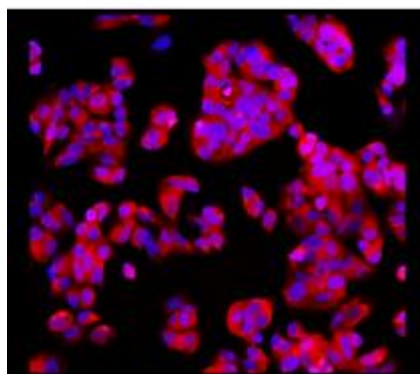
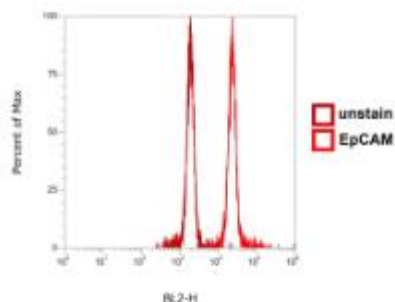
EpCAM / CD326 antibody

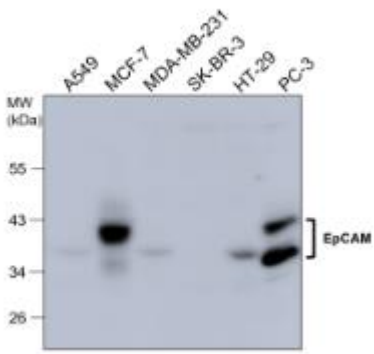

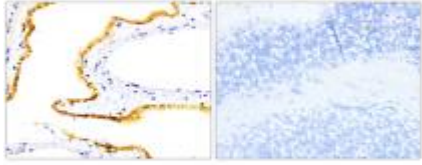
Product Name	EpCAM / CD326 antibody
Product Number	JX10084
Host	Rabbit
Clonality	Polyclonal
Application	WB, ICC/IF, IHC-P, Flow cytometry
Species Reactivity	Human, Mouse
Isotype	IgG
Storage	Store as concentrated solution. Centrifuge briefly prior to opening vial. For short-term storage (1-2 weeks), store at 4°C. For long-term storage, aliquot and store at -20°C or below. Avoid multiple freeze-thaw cycles.
Storage Buffer	100mM Tris Glycine, 20% Glycerol (pH7) contains 0.025% ProClin 300
Form	Liquid
Recommended Applications Dilutions	Western Blot 1:1000–1:2000 Immunocytochemistry / Immunofluorescence 1:200–1:400 Immunohistochemistry (Paraffin) 1:100-1:150 Flow Cytometry 1:50-1:200
Notes	Gently mix before use. Optimal concentrations and conditions for each application should be determined by the user.

Flow cytometry analysis of MCF-7 cells using JX10084 EpCAM / CD326 antibody.

ICC/IF analysis of MCF-7 cells using JX10084 EpCAM / CD326 antibody counterstained with DAPI (blue) and Phalloidin (Red).
Dilution: 1:200

WB analysis of various sample extracts using JX10084 EpCAM / CD326 antibody.
Loading amount: 40 µg per lane
Dilution: 1:1000



<p>WB analysis of various sample extracts using JX10084 EpCAM / CD326 antibody. Loading amount: 40 µg per lane Dilution: 1:1000</p>	<p>IHC-P analysis of mouse tissue section using JX10084 EpCAM / CD326 antibody. Antigen retrieval: Citrate Buffer, pH 6.0 Dilution: 1:200</p>	<p>IHC-P analysis of mouse tissue section using JX10084 EpCAM / CD326 antibody. Antigen retrieval: Citrate Buffer, pH 6.0 Dilution: 1:200</p>
		
<p>IHC-P analysis of human cancer tissue section using JX10084 EpCAM / CD326 antibody. Dilution: 1:200</p>	<p>IHC-P analysis of human cancer tissue section using JX10084 EpCAM / CD326 antibody. Dilution: 1:200</p>	
