

Catalog Number: JX10082

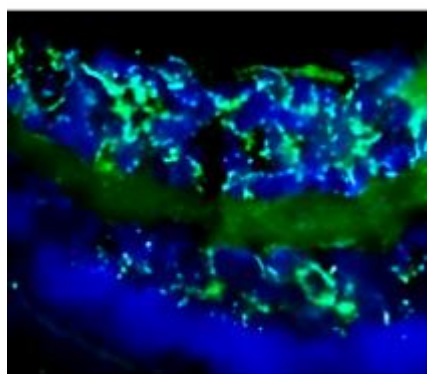
Package size: 25, 100µl

Store at: -20°C

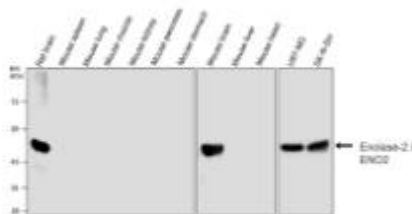
NSE / Enolase-2 antibody

Product Name	NSE / Enolase-2 antibody
Product Number	JX10082
Host	Rabbit
Clonality	Polyclonal
Application	WB, ICC/IF, IHC-P
Species Reactivity	Human, Mouse, Rat
Isotype	IgG
Storage	Store as concentrated solution. Centrifuge briefly prior to opening vial. For short-term storage (1-2 weeks), store at 4°C. For long-term storage, aliquot and store at -20°C or below. Avoid multiple freeze-thaw cycles.
Storage Buffer	100mM Tris Glycine, 20% Glycerol (pH7) contains 0.025% ProClin 300
Form	Liquid
Recommended Applications Dilutions	Western Blot 1:2000– 1:14000 Immunocytochemistry / Immunofluorescence 1:500 – 1:1000 Immunohistochemistry (Paraffin) 1:400 – 1:600
Notes	Gently mix before use. Optimal concentrations and conditions for each application should be determined by the user.

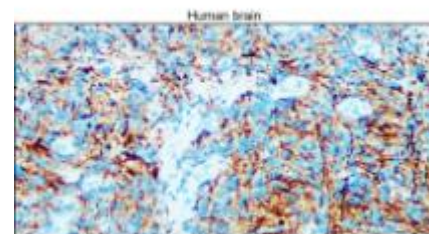
IHC-fr analysis of mouse retina tissue section using JX10082 NSE / Enolase-2 antibody.
Dilution: 1:500

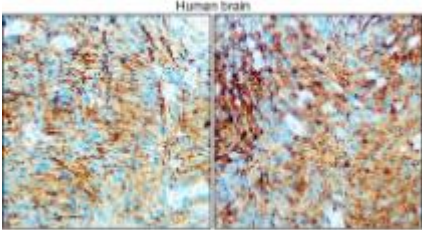
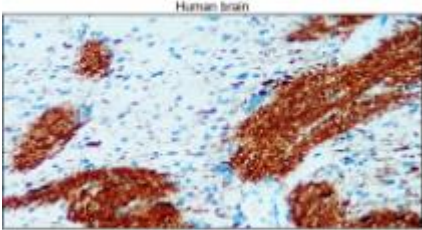
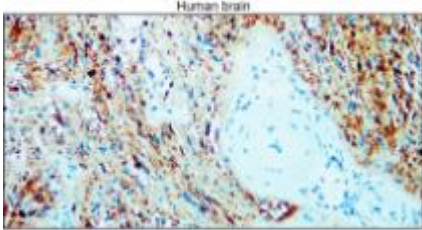
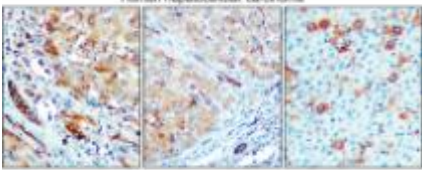
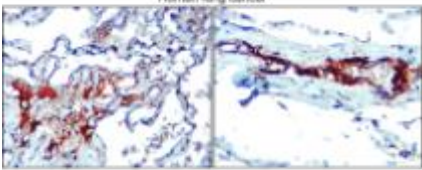
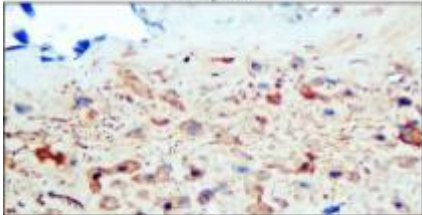
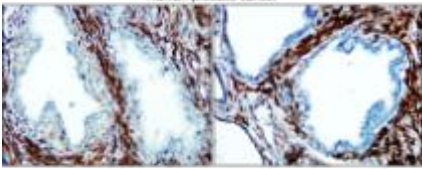
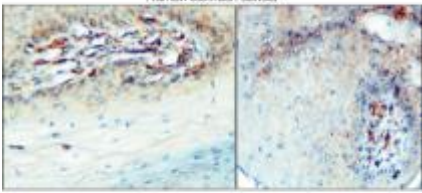
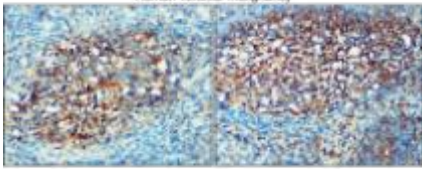


WB analysis of various sample extracts using JX10082 NSE / Enolase-2 antibody.
Loading amount: 30 µg per lane
Dilution: 1:3000



IHC-P analysis of human brain tissue section using JX10082 NSE / Enolase-2 antibody.
Dilution: 1:400



<p>IHC-P analysis of human brain tissue section using JX10082 NSE / Enolase-2 antibody. Dilution: 1:400</p>	<p>IHC-P analysis of human brain tissue section using JX10082 NSE / Enolase-2 antibody. Dilution: 1:400</p>	<p>IHC-P analysis of human brain tissue section using JX10082 NSE / Enolase-2 antibody. Dilution: 1:400</p>
 <p>Human brain</p>	 <p>Human brain</p>	 <p>Human brain</p>
<p>IHC-P analysis of human hepatocellular carcinoma tissue section using JX10082 NSE / Enolase-2 antibody. Dilution: 1:400</p>	<p>IHC-P analysis of human lung cancer tissue section using JX10082 NSE / Enolase-2 antibody. Dilution: 1:400</p>	<p>IHC-P analysis of human placenta tissue section using JX10082 NSE / Enolase-2 antibody. Dilution: 1:400</p>
 <p>Human hepatocellular carcinoma</p>	 <p>Human lung cancer</p>	 <p>Human placenta</p>
<p>IHC-P analysis of human prostate cancer tissue section using JX10082 NSE / Enolase-2 antibody. Dilution: 1:400</p>	<p>IHC-P analysis of human stomach cancer tissue section using JX10082 NSE / Enolase-2 antibody. Dilution: 1:400</p>	<p>IHC-P analysis of human tonsillar malignancy tissue section using JX10082 NSE / Enolase-2 antibody. Dilution: 1:400</p>
 <p>Human prostate cancer</p>	 <p>Human stomach cancer</p>	 <p>Human Tonsillar malignancy</p>

