



Catalog Number: JX10078

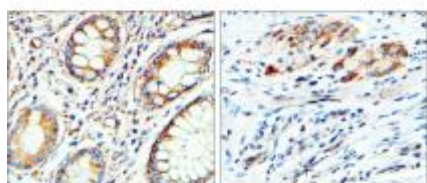
Package size: 25, 100µl

Store at: -20°C

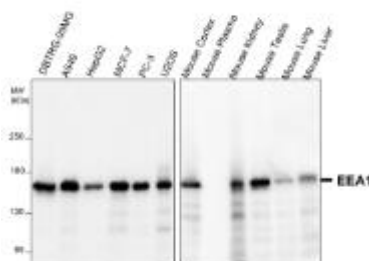
EEA1 antibody

Product Name	EEA1 antibody
Product Number	JX10078
Host	Rabbit
Clonality	Polyclonal
Application	WB, ICC/IF, IHC-P
Species Reactivity	Human, Mouse, Rat
Isotype	IgG
Storage	Store as concentrated solution. Centrifuge briefly prior to opening vial. For short-term storage (1-2 weeks), store at 4°C. For long-term storage, aliquot and store at -20°C or below. Avoid multiple freeze-thaw cycles.
Storage Buffer	100mM Tris Glycine, 20% Glycerol (pH7) contains 0.025% ProClin 300
Form	Liquid
Recommended Applications Dilutions	Western Blot 1:2000-1:4000 Immunocytochemistry / Immunofluorescence 1:500-1:1000 Immunohistochemistry (Paraffin) 1:100
Notes	Gently mix before use. Optimal concentrations and conditions for each application should be determined by the user.

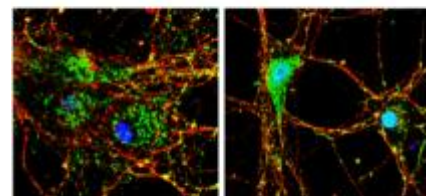
IHC-P analysis of human testis, breast, colorectal and lymph node cancer tissue sections using JX10078 EEA1 antibody.
Dilution: 1:100



WB analysis of various sample extracts using JX10078 EEA1 antibody.
Loading amount: 35 µg per lane
Dilution: 1:2000



ICC/IF analysis of DIV9 rat E18 primary cortical neurons using JX10078 EEA1 antibody (Green) counterstained with DAPI (blue) and Tuj1 antibody (Red).
Dilution: 1:500



ICC/IF analysis of MCF-7 cells using
JX10078 EEA1 antibody (Red)
counterstained with DAPI (blue).
Dilution: 1:500

