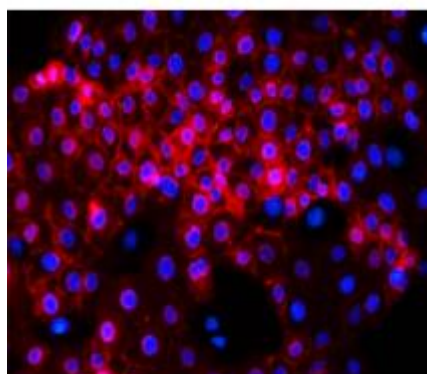


Catalog Number: JX10077
Package size: 25, 100µl
Store at: -20°C

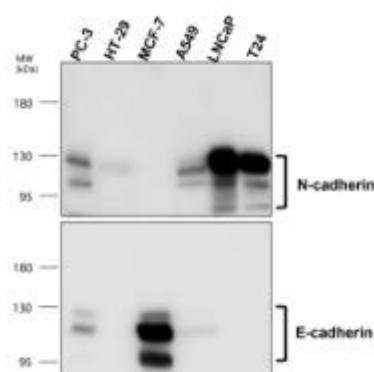
E-cadherin antibody

Product Name	E-cadherin antibody
Product Number	JX10077
Host	Rabbit
Clonality	Polyclonal
Application	WB, ICC/IF, IHC-P
Species Reactivity	Human, Mouse, Rat
Isotype	IgG
Storage	Store as concentrated solution. Centrifuge briefly prior to opening vial. For short-term storage (1-2 weeks), store at 4°C. For long-term storage, aliquot and store at -20°C or below. Avoid multiple freeze-thaw cycles.
Storage Buffer	100mM Tris Glycine, 1% BSA, 20% Glycerol (pH7) contains 0.025% ProClin 300
Form	Liquid
Recommended Applications Dilutions	Western Blot 1:1000 Immunocytochemistry / Immunofluorescence 1:100-1:500 Immunohistochemistry (Paraffin) 1:100-1:200
Notes	Gently mix before use. Optimal concentrations and conditions for each application should be determined by the user.

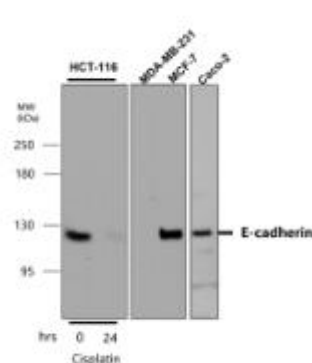
ICC/IF analysis of 4% paraformaldehyde fixed H1299 cells using JX10077 E-cadherin antibody.
Permeabilization: 0.2% Triton X-100

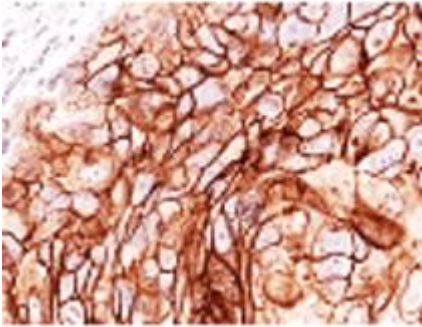
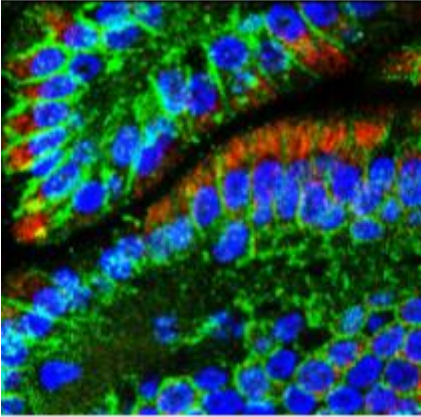



WB analysis of various sample extracts using JX10077 E-cadherin antibody.
Loading amount: 50 µg per lane
Dilution: 1:1000



WB analysis of various sample extracts using JX10077 E-cadherin antibody.
Loading amount: 50 µg per lane
Dilution: 1:1000



<p>IHC-P analysis of human cancer tissue section using JX10077 E-cadherin antibody. Antigen retrieval: Tris EDTA pH.9</p>	<p>IHC-P analysis of mouse colon tissue section using JX10077 E-cadherin antibody (Green) counterstained with DAPI (Blue). Dilution: 1:300</p>	<p>IHC-P analysis of human cancer tissue section using JX10077 E-cadherin antibody. Dilution: 1:100</p>
		
<p>IHC-P analysis of human cancer tissue section using JX10077 E-cadherin antibody. Dilution: 1:100</p>	<p>IHC-P analysis of human colorectal cancer tissue section using JX10077 E-cadherin antibody. Dilution: 1:100</p>	<p>IHC-P analysis of human colorectal cancer tissue section using JX10077 E-cadherin antibody. Dilution: 1:100</p>
