



Catalog Number: JX10068

Package size: 25, 100µl

Store at: -20°C

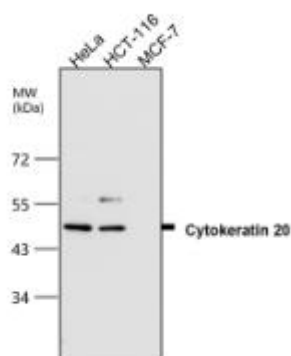
## Cytokeratin 20 / CK20 antibody

<b>Product Name</b>	Cytokeratin 20 / CK20 antibody
<b>Product Number</b>	JX10068
<b>Host</b>	Rabbit
<b>Clonality</b>	Polyclonal
<b>Application</b>	WB, ICC/IF, IHC-P
<b>Species Reactivity</b>	Human
<b>Isotype</b>	IgG
<b>Storage</b>	Store as concentrated solution. Centrifuge briefly prior to opening vial. For short-term storage (1-2 weeks), store at 4°C. For long-term storage, aliquot and store at -20°C or below. Avoid multiple freeze-thaw cycles.
<b>Storage Buffer</b>	100mM Tris Glycine, 20% Glycerol (pH7) contains 0.025% ProClin 300
<b>Form</b>	Liquid
<b>Recommended Applications Dilutions</b>	Western Blot 1:1000–1:2000 Immunocytochemistry / Immunofluorescence 1:200–1:500 Immunohistochemistry (Paraffin) 1:200–1:300
<b>Notes</b>	Gently mix before use. Optimal concentrations and conditions for each application should be determined by the user.

WB analysis of various sample extracts using JX10068 Cytokeratin 20 / CK20 antibody.

Loading amount: 45 µg per lane

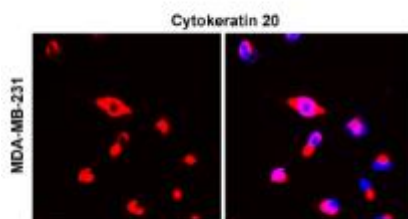
Dilution: 1:2000



ICC/IF analysis of 4% paraformaldehyde fixed cells using JX10068 Cytokeratin 20 / CK20 antibody (Red) counterstained with DAPI (blue).

Permeabilization: 0.1% NP-40 for 10 min at RT

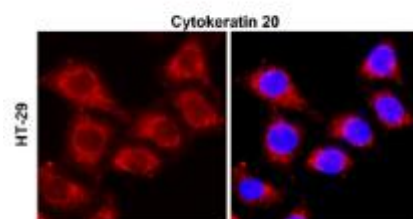
Dilution: 1:200



ICC/IF analysis of 4% paraformaldehyde fixed cells using JX10068 Cytokeratin 20 / CK20 antibody (Red) counterstained with DAPI (blue).

Permeabilization: 0.1% NP-40 for 10 min at RT

Dilution: 1:200



IHC-P analysis of human cancer tissue section using JX10068 Cytokeratin 20 / CK20 antibody.  
Dilution: 1:200

IHC-P analysis of human cancer tissue section using JX10068 Cytokeratin 20 / CK20 antibody.  
Dilution: 1:200

