



Catalog Number: JX10066

Package size: 25, 100µl

Store at: -20°C

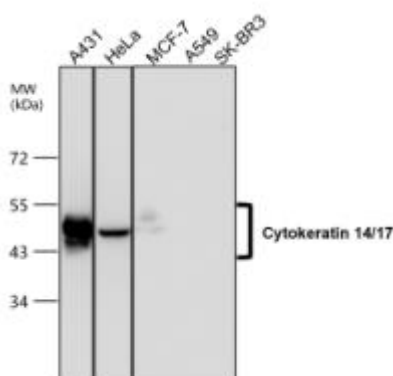
Cytokeratin 14/17, CK14/17 antibody

Product Name	Cytokeratin 14/17, CK14/17 antibody
Product Number	JX10066
Host	Rabbit
Clonality	Polyclonal
Application	WB, ICC/IF, IHC-P
Species Reactivity	Human
Isotype	IgG
Storage	Store as concentrated solution. Centrifuge briefly prior to opening vial. For short-term storage (1-2 weeks), store at 4°C. For long-term storage, aliquot and store at -20°C or below. Avoid multiple freeze-thaw cycles.
Storage Buffer	100mM Tris Glycine, 3% BSA, 20% Glycerol (pH7) contains 0.025% ProClin 300
Form	Liquid
Recommended Applications Dilutions	Western Blot 1:1000–1:2000 Immunocytochemistry / Immunofluorescence 1:100–1:400 Immunohistochemistry (Paraffin) 1:100–1:300
Notes	Gently mix before use. Optimal concentrations and conditions for each application should be determined by the user.

WB analysis of various sample extracts using JX10066 Cytokeratin 14/17, CK14/17 antibody.

Loading amount: 45 µg per lane

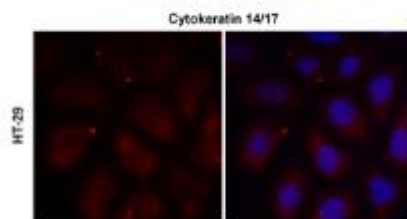
Dilution: 1:2000



ICC/IF analysis of 4% paraformaldehyde fixed cells using JX10066 Cytokeratin 14/17, CK14/17 antibody (Red) counterstained with DAPI (blue).

Permeabilization: 0.1% NP-40 for 10 min at RT

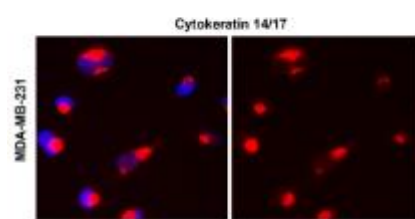
Dilution: 1:150



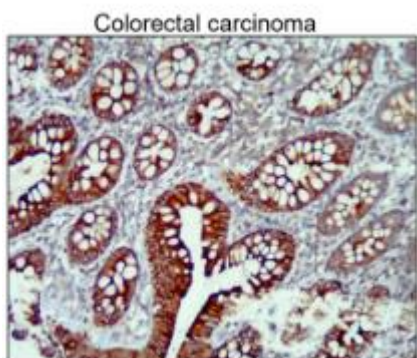
ICC/IF analysis of 4% paraformaldehyde fixed cells using JX10066 Cytokeratin 14/17, CK14/17 antibody (Red) counterstained with DAPI (blue).

Permeabilization: 0.1% NP-40 for 10 min at RT

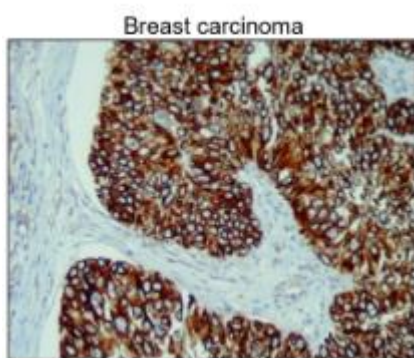
Dilution: 1:150



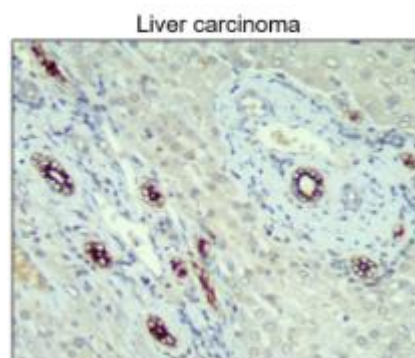
IHC-P analysis of human cancer tissue section using JX10066 Cytokeratin 14/17, CK14/17 antibody.
Dilution: 1:100



IHC-P analysis of human cancer tissue section using JX10066 Cytokeratin 14/17, CK14/17 antibody.
Dilution: 1:100



IHC-P analysis of human cancer tissue section using JX10066 Cytokeratin 14/17, CK14/17 antibody.
Dilution: 1:100



IHC-P analysis of human cancer tissue section using JX10066 Cytokeratin 14/17, CK14/17 antibody.
Dilution: 1:100

