

Catalog Number: JX10060

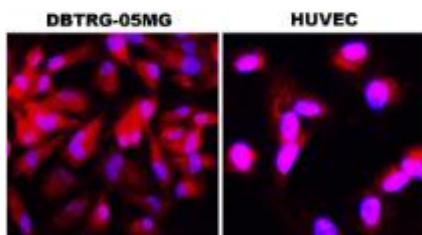
Package size: 25, 100µl

Store at: -20°C

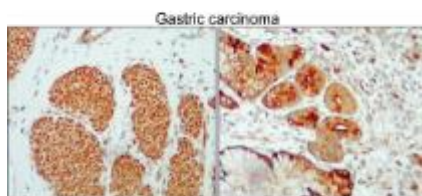
## Cyclin A2 antibody

|   |  |
|---|--|
| <b>Product Name</b>                       | Cyclin A2 antibody   |
| <b>Product Number</b>                     | JX10060  |
| <b>Host</b>                               | Rabbit   |
| <b>Clonality</b>                          | Polyclonal   |
| <b>Application</b>                        | WB, ICC/IF, IHC-P  |
| <b>Species Reactivity</b>                 | Human, Mouse   |
| <b>Isotype</b>                            | IgG  |
| <b>Storage</b>                            | Store as concentrated solution. Centrifuge briefly prior to opening vial. For short-term storage (1-2 weeks), store at 4°C. For long-term storage, aliquot and store at -20°C or below. Avoid multiple freeze-thaw cycles. |
| <b>Storage Buffer</b>                     | 100mM Tris Glycine, 20% Glycerol (pH7) contains 0.025% ProClin 300   |
| <b>Form</b>                               | Liquid   |
| <b>Recommended Applications Dilutions</b> | Western Blot 1:500-1:1000<br>Immunocytochemistry / Immunofluorescence 1:200-1:500<br>Immunohistochemistry (Paraffin) 1:100-1:200   |
| <b>Notes</b>                              | Gently mix before use. Optimal concentrations and conditions for each application should be determined by the user.  |

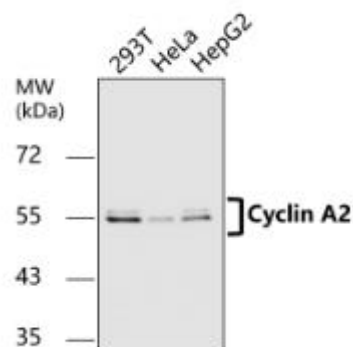
ICC/IF analysis of 4% paraformaldehyde fixed cells using JX10060 Cyclin A2 antibody (Red) counterstained with DAPI (blue).  
Permeabilization: 0.1% NP-40 for 10 min at RT  
Dilution: 1:200



IHC-P analysis of human gastric cancer tissue section using JX10060 Cyclin A2 antibody.  
Dilution: 1:100



WB analysis of various sample extracts using JX10060 Cyclin A2 antibody.  
Loading amount: 30 µg per lane  
Dilution: 1:1000



WB analysis of various sample extracts  
using JX10060 Cyclin A2 antibody.  
Loading amount: 50 µg per lane  
Dilution: 1:1000

