



Catalog Number: JX10044

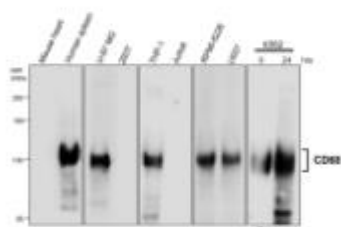
Package size: 25, 100µl

Store at: -20°C

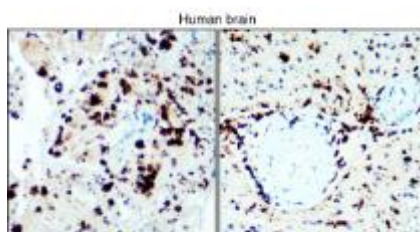
## CD68 antibody

<b>Product Name</b>	CD68 antibody
<b>Product Number</b>	JX10044
<b>Host</b>	Rabbit
<b>Clonality</b>	Polyclonal
<b>Application</b>	WB, ICC/IF, IHC-P
<b>Species Reactivity</b>	Human
<b>Isotype</b>	IgG
<b>Storage</b>	Store as concentrated solution. Centrifuge briefly prior to opening vial. For short-term storage (1-2 weeks), store at 4°C. For long-term storage, aliquot and store at -20°C or below. Avoid multiple freeze-thaw cycles.
<b>Storage Buffer</b>	100mM Tris Glycine, 20% Glycerol (pH7) contains 0.025% ProClin 300
<b>Form</b>	Liquid
<b>Recommended Applications Dilutions</b>	Western Blot 1:1000 Immunocytochemistry / Immunofluorescence 1:200 – 1:500 Immunohistochemistry (Paraffin) 1:100 – 1:300
<b>Notes</b>	Gently mix before use. Optimal concentrations and conditions for each application should be determined by the user.

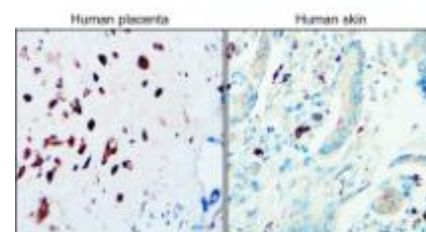
WB analysis of various sample extracts using JX10044 CD68 antibody.  
Loading amount: 35 µg per lane



IHC-P analysis of human brain tissue section using JX10044 CD68 antibody.  
Dilution: 1:400



IHC-P analysis of human placenta and skin tissue section using JX10044 CD68 antibody.  
Dilution: 1:300



IHC-P analysis of human spleen, liver, tonsil tissue sections using JX10044 CD68 antibody.

Dilution: 1:300

