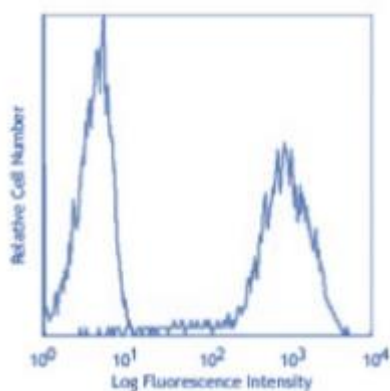


Catalog Number: JX10043
Package size: 25, 100µl
Store at: -20°C

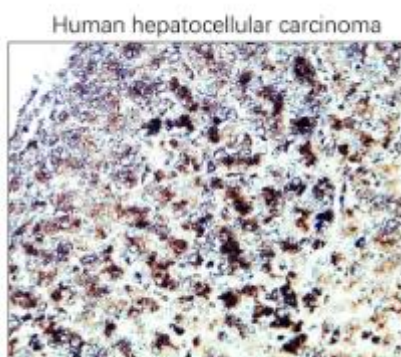
CD63 antibody

Product Name	CD63 antibody
Product Number	JX10043
Host	Rabbit
Clonality	Polyclonal
Application	WB, IHC-P, Flow cytometry
Species Reactivity	Human, Mouse, Rat
Isotype	IgG
Storage	Store as concentrated solution. Centrifuge briefly prior to opening vial. For short-term storage (1-2 weeks), store at 4°C. For long-term storage, aliquot and store at -20°C or below. Avoid multiple freeze-thaw cycles.
Storage Buffer	100mM Tris Glycine, 20% Glycerol (pH7) contains 0.025% ProClin 300
Form	Liquid
Recommended Applications Dilutions	Western Blot 1:500 – 1:800 Flow Cytometry 1:100 Immunohistochemistry (Paraffin) 1:100 – 1:200
Notes	Gently mix before use. Optimal concentrations and conditions for each application should be determined by the user.

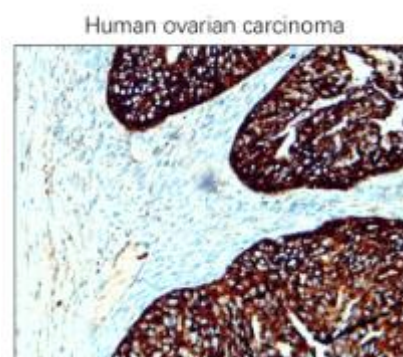
Flow cytometry analysis of human peripheral blood lymphocytes using JX10043 CD63 antibody.
Dilution: 1:100



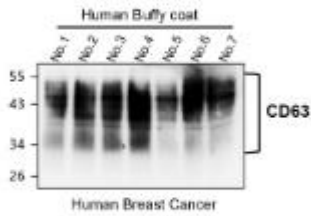
IHC-P analysis of human cancer tissue section using JX10043 CD63 antibody.
Dilution: 1:100



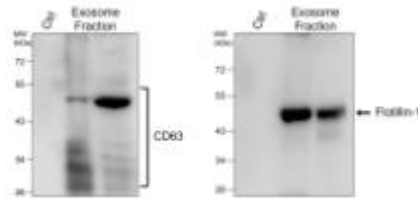
IHC-P analysis of human cancer tissue section using JX10043 CD63 antibody.
Dilution: 1:100



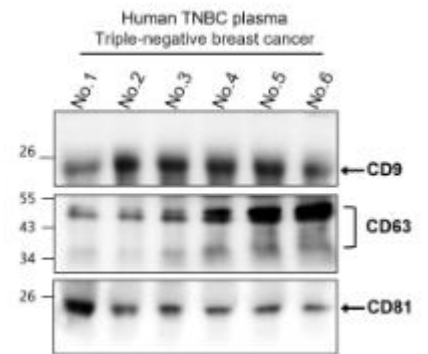
WB analysis of various sample extracts using JX10043 CD63 antibody.
 Loading amount: 10 µg per lane
 Dilution: 1:1000



WB analysis of various sample extracts using JX10043 CD63 antibody.
 Loading amount: 50 µg per lane
 Dilution: 1:1000



WB analysis of various sample extracts using JX10043 CD63 antibody.
 Loading amount: 50 µg per lane
 Dilution: 1:1000



WB analysis of various sample extracts using JX10043 CD63 antibody.
 Loading amount: 50 µg per lane
 Dilution: 1:1000

