



Catalog Number: JX10042

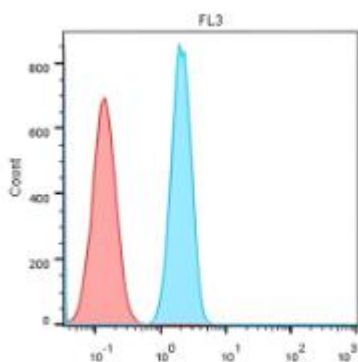
Package size: 25, 100µl

Store at: -20°C

## CD56 / NCAM1 antibody

<b>Product Name</b>	CD56 / NCAM1 antibody
<b>Product Number</b>	JX10042
<b>Host</b>	Rabbit
<b>Clonality</b>	Polyclonal
<b>Application</b>	WB, Flow cytometry
<b>Species Reactivity</b>	Human, Mouse, Rat
<b>Isotype</b>	IgG
<b>Storage</b>	Store as concentrated solution. Centrifuge briefly prior to opening vial. For short-term storage (1-2 weeks), store at 4°C. For long-term storage, aliquot and store at -20°C or below. Avoid multiple freeze-thaw cycles.
<b>Storage Buffer</b>	100mM Tris Glycine, 20% Glycerol (pH7) contains 0.025% ProClin 300
<b>Form</b>	Liquid
<b>Recommended Applications Dilutions</b>	Western Blot 1:500 – 1:1000 Flow Cytometry 1:100
<b>Notes</b>	Gently mix before use. Optimal concentrations and conditions for each application should be determined by the user.

Flow cytometry analysis of human peripheral blood lymphocytes using JX10042 CD56 / NCAM1 antibody.  
Dilution: 1:100



WB analysis of various sample extracts using JX10042 CD56 / NCAM1 antibody.  
Loading amount: 50 µg per lane  
Dilution: 1:700

