



Catalog Number: JX10040

Package size: 25, 100µl

Store at: -20°C

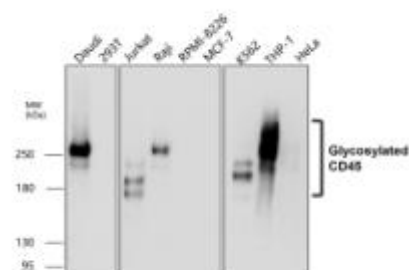
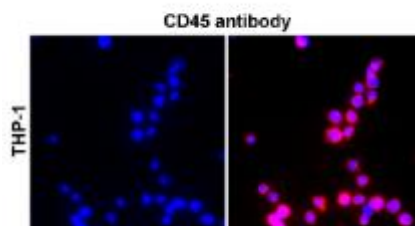
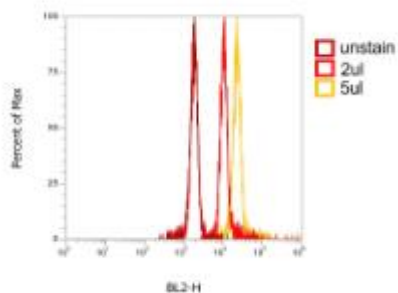
## CD45 antibody

<b>Product Name</b>	CD45 antibody
<b>Product Number</b>	JX10040
<b>Host</b>	Rabbit
<b>Clonality</b>	Polyclonal
<b>Application</b>	WB, ICC/IF, IHC-P, Flow cytometry
<b>Species Reactivity</b>	Human, Mouse
<b>Isotype</b>	IgG
<b>Storage</b>	Store as concentrated solution. Centrifuge briefly prior to opening vial. For short-term storage (1-2 weeks), store at 4°C. For long-term storage, aliquot and store at -20°C or below. Avoid multiple freeze-thaw cycles.
<b>Storage Buffer</b>	100mM Tris Glycine, 20% Glycerol (pH7) contains 0.025% ProClin 300
<b>Form</b>	Liquid
<b>Recommended Applications Dilutions</b>	Western Blot 1:500-1:1000 Immunocytochemistry / Immunofluorescence 1:200-1:400 Immunohistochemistry (Paraffin) 1:400-1:800 Flow cytometry 1:100
<b>Notes</b>	Gently mix before use. Optimal concentrations and conditions for each application should be determined by the user.

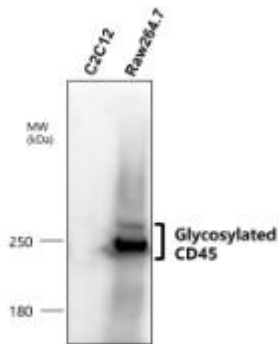
Flow cytometry analysis of THP-1 cells using JX10040 CD45 antibody.

ICC/IF analysis of 4% paraformaldehyde fixed cells using JX10040 CD45 antibody (Red) counterstained with DAPI (blue).  
Permeabilization: 0.1% NP-40 for 10 min at RT  
Dilution: 1:200

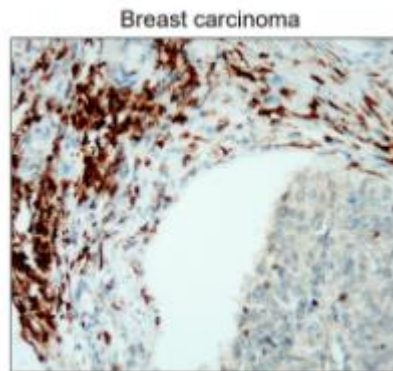
WB analysis of various sample extracts using JX10040 CD45 antibody.  
Loading amount: 50 µg per lane  
Dilution: 1:1000



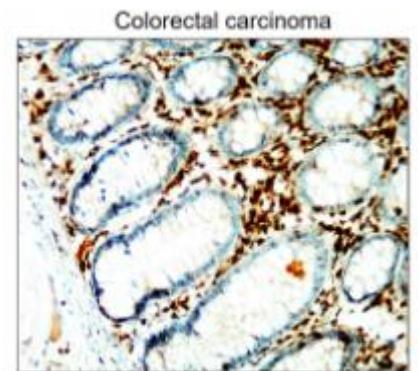
WB analysis of various sample extracts using JX10040 CD45 antibody.  
Loading amount: 50 µg per lane  
Dilution: 1:1000



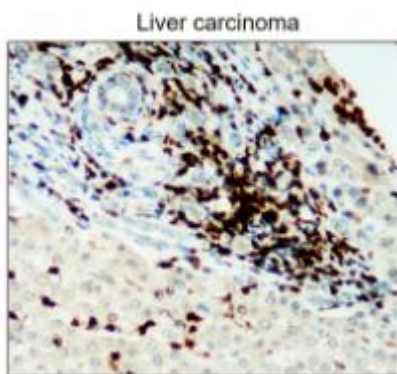
IHC-P analysis of human breast cancer tissue section using JX10040 CD45 antibody.  
Dilution: 1:400



IHC-P analysis of human colorectal cancer tissue section using JX10040 CD45 antibody.  
Dilution: 1:400



IHC-P analysis of human liver cancer tissue section using JX10040 CD45 antibody.  
Dilution: 1:400



IHC-P analysis of human lung cancer tissue section using JX10040 CD45 antibody.  
Dilution: 1:400

