



Catalog Number: JX10036

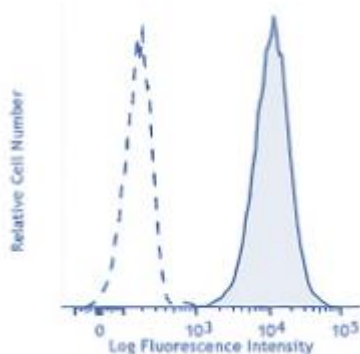
Package size: 25, 100µl

Store at: -20°C

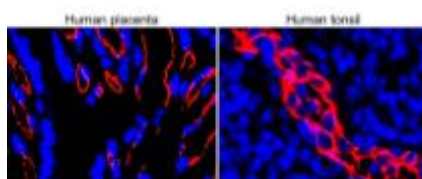
CD31 (human specific) antibody

Product Name	CD31 (human specific) antibody
Product Number	JX10036
Host	Rabbit
Clonality	Polyclonal
Application	WB, ICC/IF, IHC-P, IHC-fr, Flow cytometry
Species Reactivity	Human
Isotype	IgG
Storage	Store as concentrated solution. Centrifuge briefly prior to opening vial. For short-term storage (1-2 weeks), store at 4°C. For long-term storage, aliquot and store at -20°C or below. Avoid multiple freeze-thaw cycles.
Storage Buffer	100mM Tris Glycine, 20% Glycerol (pH7) contains 0.025% ProClin 300
Form	Liquid
Recommended Applications Dilutions	Western Blot 1:1000 Immunocytochemistry / Immunofluorescence 1:500 – 1:1000 Immunohistochemistry (Paraffin) 1:100 – 1:300 Immunohistochemistry (Frozen) 1:100 – 1:300 Flow Cytometry 1:50 – 1:150
Notes	Gently mix before use. Optimal concentrations and conditions for each application should be determined by the user.

Flow cytometry analysis of human peripheral blood lymphocytes using JX10036 CD31 (human specific) antibody.

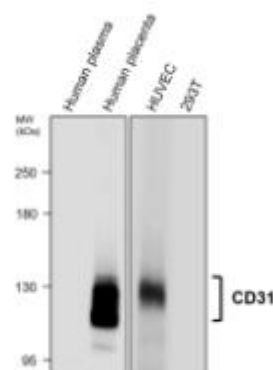


IHC-fr analysis of human tissue section using JX10036 CD31 (human specific) antibody counterstained with DAPI (blue).
Dilution: 1:200



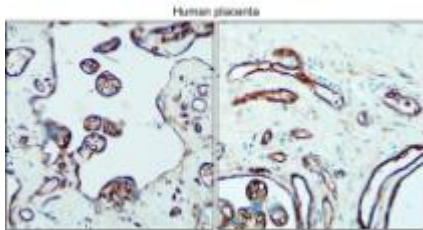
WB analysis of various sample extracts using JX10036 CD31 (human specific) antibody.

Loading amount: 35 µg per lane
Dilution: 1:1000



IHC-P analysis of human placenta tissue section using JX10036 CD31 (human specific) antibody.

Dilution: 1:150



IHC-P analysis of human placenta tissue section using JX10036 CD31 (human specific) antibody.

Dilution: 1:150

