



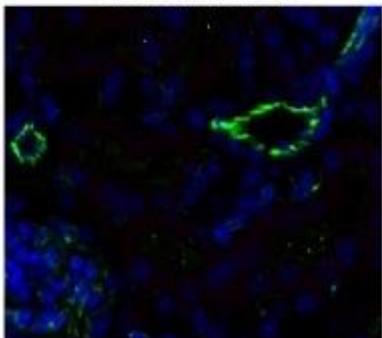
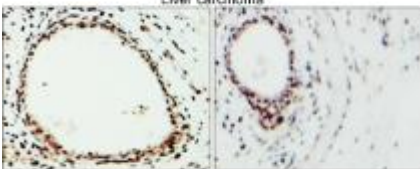
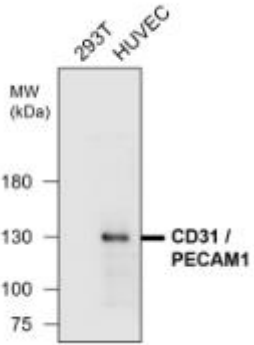
Catalog Number: JX10035

Package size: 25, 100µl

Store at: -20°C

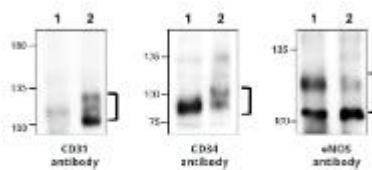
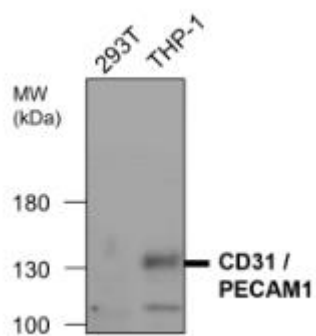
CD31 / PECAM1 antibody

Product Name	CD31 / PECAM1 antibody
Product Number	JX10035
Host	Rabbit
Clonality	Polyclonal
Application	WB, IHC-P, IHC-fr
Species Reactivity	Human
Isotype	IgG
Storage	Store as concentrated solution. Centrifuge briefly prior to opening vial. For short-term storage (1-2 weeks), store at 4°C. For long-term storage, aliquot and store at -20°C or below. Avoid multiple freeze-thaw cycles.
Storage Buffer	100mM Tris Glycine, 1% BSA, 20% Glycerol (pH7) contains 0.025% ProClin 300
Form	Liquid
Recommended Applications Dilutions	Western Blot 1:500-1:1000 Immunohistochemistry (Frozen) 1:100-1:200 Immunohistochemistry (Paraffin) 1:100-1:200
Notes	Gently mix before use. Optimal concentrations and conditions for each application should be determined by the user.

<p>IHC-fr analysis of liver section using JX10035 CD31 / PECAM1 antibody (Green). Dilution: 1:100</p>	<p>IHC-P analysis of human liver cancer tissue section using JX10035 CD31 / PECAM1 antibody. Dilution: 1:100</p>	<p>WB analysis of various sample extracts using JX10035 CD31 / PECAM1 antibody. Loading amount: 30 µg per lane Dilution: 1:500</p>
<p>Liver carcinoma</p> 	<p>Liver carcinoma</p> 	
<p>WB analysis of various sample extracts using JX10035 CD31 / PECAM1 antibody. Loading amount: 30 µg per lane</p>	<p>WB analysis of various sample extracts using JX10035 CD31 / PECAM1 antibody. Loading amount: 30 µg per lane</p>	

Dilution: 1:500

Dilution: 1:500



Lane 1: Human umbilical vein
Lane 2: Human placenta

