



Catalog Number: JX10033

Package size: 25, 100µl

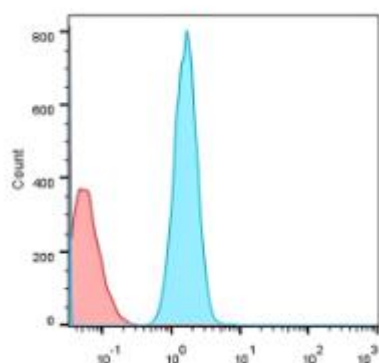
Store at: -20°C

CD3 antibody

| | |
|---|--|
| Product Name | CD3 antibody |
| Product Number | JX10033 |
| Host | Rabbit |
| Clonality | Polyclonal |
| Application | WB, ICC/IF, IHC-P |
| Species Reactivity | Human, Mouse, Rat |
| Isotype | IgG |
| Storage | Store as concentrated solution. Centrifuge briefly prior to opening vial. For short-term storage (1-2 weeks), store at 4°C. For long-term storage, aliquot and store at -20°C or below. Avoid multiple freeze-thaw cycles. |
| Storage Buffer | 100mM Tris Glycine, 20% Glycerol (pH7) contains 0.025% ProClin 300 |
| Form | Liquid |
| Recommended Applications Dilutions | Western Blot 1:500-1:1000 Immunocytochemistry / Immunofluorescence 1:300-1:400 Immunohistochemistry (Paraffin) 1:100-1:300 |
| Notes | Gently mix before use. Optimal concentrations and conditions for each application should be determined by the user. |

Flow cytometry analysis of human peripheral blood lymphocytes using JX10033 CD3 antibody.

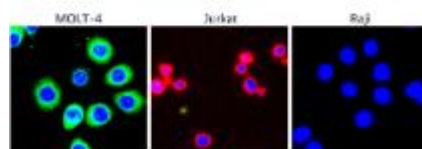
Dilution: 1:100



ICC/IF analysis of 4% paraformaldehyde fixed cells using JX10033 CD3 antibody counterstained with DAPI (blue).

Permeabilization: 0.1% NP-40 for 10 min at RT

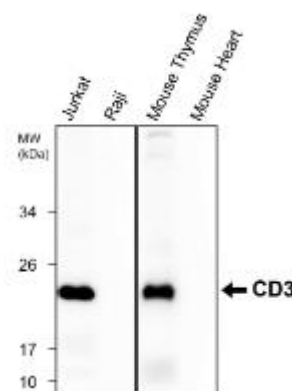
Dilution: 1:200

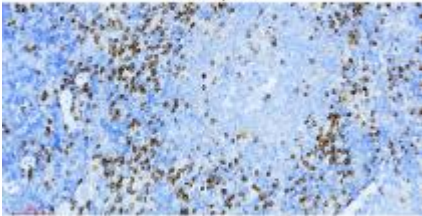
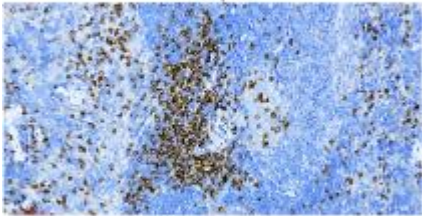
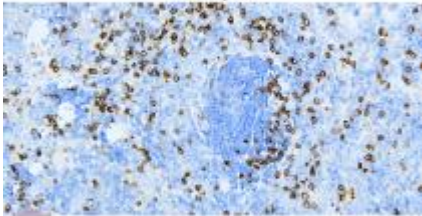
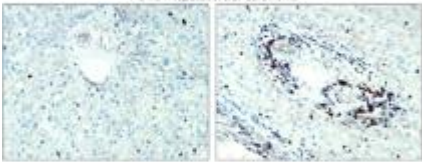
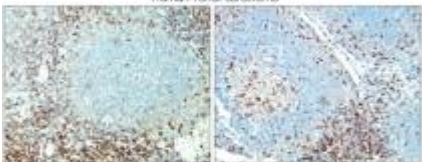


WB analysis of various sample extracts using JX10033 CD3 antibody.

Loading amount: 40 µg per lane

Dilution: 1:1000



| | | |
|--|--|--|
| <p>IHC-P analysis of mouse spleen tissue section using JX10033 CD3 antibody. Antigen retrieval: Citrate Buffer, pH 6.0 Dilution: 1:200</p> | <p>IHC-P analysis of mouse spleen tissue section using JX10033 CD3 antibody. Antigen retrieval: Citrate Buffer, pH 6.0 Dilution: 1:200</p> | <p>IHC-P analysis of mouse spleen tissue section using JX10033 CD3 antibody. Antigen retrieval: Citrate Buffer, pH 6.0 Dilution: 1:200</p> |
| <p style="text-align: center;">Mouse spleen</p>  | <p style="text-align: center;">Mouse spleen</p>  | <p style="text-align: center;">Mouse spleen</p>  |
| <p>IHC-P analysis of human hepatocellular cancer tissue section using JX10033 CD3 antibody. Dilution: 1:100</p> | <p>IHC-P analysis of human tonsil carcinoma tissue section using JX10033 CD3 antibody. Dilution: 1:200</p> | |
| <p style="text-align: center;">Human hepatocellular carcinoma</p>  | <p style="text-align: center;">Human Tonsil carcinoma</p>  | |

