



Catalog Number: JX10032

Package size: 25, 100µl

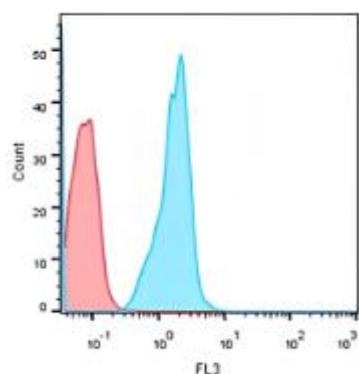
Store at: -20°C

CD3 antibody

Product Name	CD3 antibody
Product Number	JX10032
Host	Rabbit
Clonality	Polyclonal
Application	WB, ICC/IF, IHC-P, Flow cytometry
Species Reactivity	Human
Isotype	IgG
Storage	Store as concentrated solution. Centrifuge briefly prior to opening vial. For short-term storage (1-2 weeks), store at 4°C. For long-term storage, aliquot and store at -20°C or below. Avoid multiple freeze-thaw cycles.
Storage Buffer	100mM Tris Glycine, 20% Glycerol (pH7) contains 0.025% ProClin 300
Form	Liquid
Recommended Applications Dilutions	Western Blot 1:500 – 1:1000 Immunocytochemistry / Immunofluorescence 1:300 – 1:400 Immunohistochemistry (Paraffin) 1:300 – 1:500 Flow Cytometry 1:100 – 1:200
Notes	Gently mix before use. Optimal concentrations and conditions for each application should be determined by the user.

Flow cytometry analysis of human peripheral blood lymphocytes using JX10032 CD3 antibody.

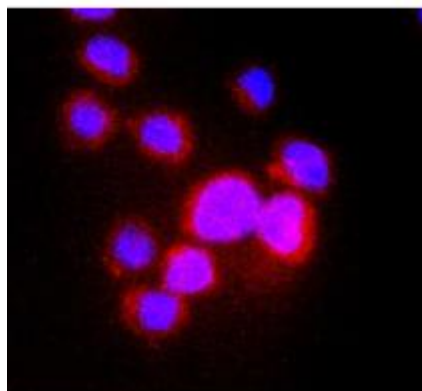
Dilution: 1:100



ICC/IF analysis of 4% paraformaldehyde fixed cells using JX10032 CD3 antibody (Red) counterstained with DAPI (blue).

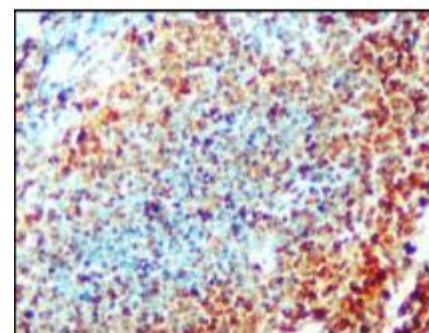
Permeabilization: 0.1% NP-40 for 10 min at RT

Dilution: 1:300



IHC-P analysis of human cancer tissue section using JX10032 CD3 antibody.

Dilution: 1:400



WB analysis of various sample extracts
using JX10032 CD3 antibody.
Loading amount: 50 µg per lane
Dilution: 1:500

