

Catalog Number: JX10031

CD206 / MRC1 antibody

Package size: 25, 100µl

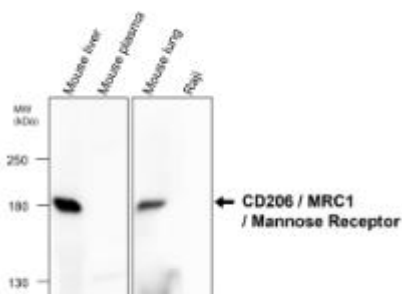
Store at: -20°C

| | |
|---|--|
| Product Name | CD206 / MRC1 antibody |
| Product Number | JX10031 |
| Host | Rabbit |
| Clonality | Polyclonal |
| Application | WB, ICC/IF, IHC-P |
| Species Reactivity | Human, Mouse, Rat |
| Isotype | IgG |
| Storage | Store as concentrated solution. Centrifuge briefly prior to opening vial. For short-term storage (1-2 weeks), store at 4°C. For long-term storage, aliquot and store at -20°C or below. Avoid multiple freeze-thaw cycles. |
| Storage Buffer | 100mM Tris Glycine, 20% Glycerol (pH7) contains 0.025% ProClin 300 |
| Form | Liquid |
| Recommended Applications Dilutions | Western Blot 1:1000 Immunocytochemistry / Immunofluorescence 1:200–1:300 Immunohistochemistry (Paraffin) 1:100-1:200 |
| Notes | Gently mix before use. Optimal concentrations and conditions for each application should be determined by the user. |

WB analysis of various sample extracts using JX10031 CD206 / MRC1 antibody.

Loading amount: 50 µg per lane

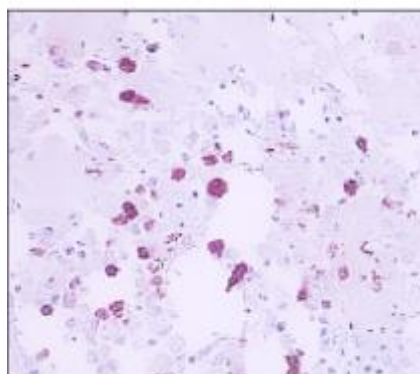
Dilution: 1:1000



IHC-P analysis of human lung tissue section using JX10031 CD206 / MRC1 antibody.

Antigen retrieval: Tris EDTA pH.9

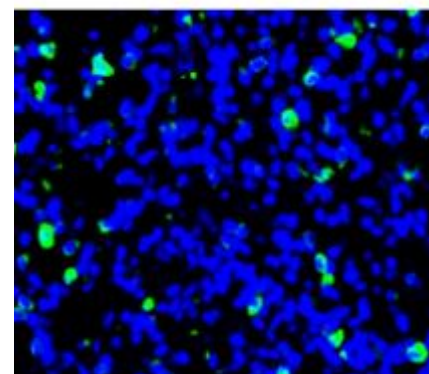
Dilution: 1:100



IHC-P analysis of mouse lung tissue section using JX10031 CD206 / MRC1 antibody.

Antigen retrieval: Tris EDTA pH.9

Dilution: 1:100



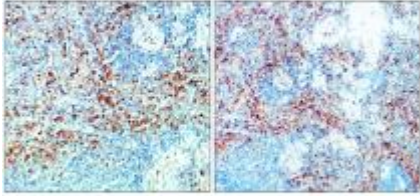
IHC-P analysis of human lymph node tissue section using JX10031 CD206 / MRC1 antibody.

IHC-P analysis of human hepatocellular carcinoma tissue section using JX10031 CD206 / MRC1 antibody.

Antigen retrieval: Tris EDTA pH.9

Dilution: 1:100

Dilution: 1:100



Human Hepatocellular Carcinoma (HCC)

